



Mumei-ho (Nissho Pass)

無名峰 (日勝峠) Ski Touring Map 1:25000



0 250 500 750 1000m

1cm on the map equals approx. 250m on the ground
Magnetic declination: 9° 17' W

Map by hokkadowilds.org/Rob Thomson CC BY-SA

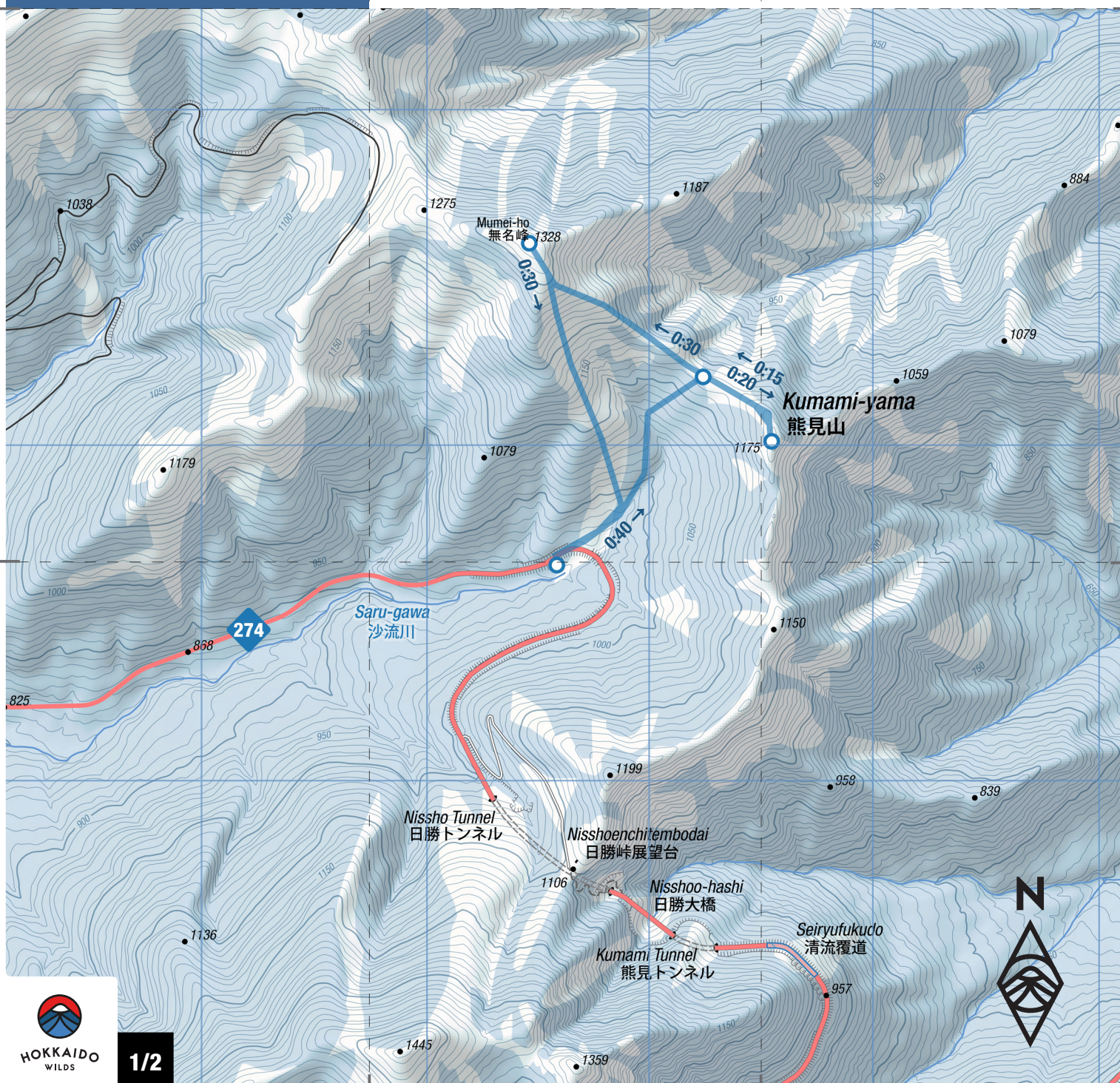
Symbol Key (some may not be present)

	Route (time between points)		Contour lines (100m, 10m)
	National Highway		Power transmission lines
	Prefectural Road		Trees/no trees
	Municipal Road		Rocks/cliff
	Minor Municipal Road		Onsen (hot spring)
	Walkway		Fumerole
	Bus route (bus stop)		Highway number
	Avalanche-prone slope		Designated campsite
			Hut

この地図の作成に当たっては、国土地理院長の承認を得て、同院発行の基盤地図情報及び電子地形図（タイル）を使用した。（承認番号 平 30 情使 第 867 号）。また、1/25,000 植生図 GIS データ（環境省生物多様性センター）も使用し、hokkadowilds.org が作成・加工したものである。
This map uses the Geospatial Information Authority of Japan digital basemap (tiles) and basemap data, with the permission of the Authority's director (permission no. 平 30 情使 第 867 号). It also uses modified 1:25,000 scale vegetation map GIS data created by the Biodiversity Center of Japan, Ministry of the Environment (<http://gis.biodic.go.jp/>).

Japanese Map Glossary

Romaji	Kanji	English
bunki	分岐	junction
cho	町	town
dake/mine	岳/峯	peak
eki	駅	station
goya/koya	小屋	hut
hinangoya	避難小屋	shelter
ike	池	pond
kawa/gawa	川	river
kako	火口	crater
ko/mizumi	湖	lake
kyo	峡	gorge
numa	沼	pond
onsen	温泉	hot spring
sawa	沢	stream
taira/daira	平	plateau
tani/dani	谷	valley
taki	滝	waterfall
toge	峠	pass
yama/san/zan	山	mountain



Mumei-ho (Nissho Pass)



 1h 40m Time	 423m Total Climb	 1328m Highest point
 5km Distance	 6/10 Difficulty	 Mar-Apr Best season

Mumei-ho (無名峰, 1328m) literally means 'no name peak', but it is a conveniently located peak that towers above the main Route 274 Nissho Pass trunk route. This makes easy access to some superb skiing on this south-facing slope. It also allows eye-popping views across the expansive Tokachi Plains to the east, as well as the entire Tokachi Range, and the Hidaka Range to the south. Starting at almost 1000m, this route should not be taken lightly. Weather windows in January and February will be few and far between - expect changeable weather and extreme cold temperatures.

LOCATION

This route is located on the northern side of Nissho Pass (日勝峠), the main road pass connecting the Tokachi plains with the western side of Hokkaido. The route starts at a parking area just before a large hairpin bend, just below the Nissho Pass proper.

ONLINE ROUTE GUIDE

Please visit the full route guide for GPS file, interactive map, and extra safety notes: <https://hokw.jp/nissho2>



Disclaimer The information on this map was derived from digital databases provided by the Geospatial Information Authority of Japan and the Biodiversity Center of Japan. Care was taken in the creation of this map. HokkaidoWilds.org cannot accept any responsibility for errors, omissions, or positional accuracy. There are no warranties, expressed or implied, including the warranty of merchantability or fitness for a particular purpose, accompanying this product. However, notification of any errors will be appreciated.

MAP, TEXT, PHOTOS | Rob Thomson

hokkaidowilds.org 2019/03/14

MAP FOLD & LAYOUT CONCEPT | Dominika Gan

Unless indicated otherwise, all content on this PDF (pages 1 to 2) is licensed under a Creative Commons Attribution-ShareAlike 4.0 International License (CC BY-SA 4.0). Please attribute <author-name> (hokkaidowilds.org), and let us know so we can link to your work. E.g., "Photo by Rick Siddle (hokkaidowilds.org)"



GENERAL NOTES

Ski touring from the road doesn't get much easier in Hokkaido than the Nissho Pass area. This route starts just below the very tippy top of Nissho Pass, so you've already gained a solid 1000m in altitude just by driving up the pass. This means that the season up here is long - conditions are usually cold. But along with that comes changeable and windy weather, which can strip the slopes to a certain degree.

This is a popular backcountry skiing route in the northern Hidaka Range. Pure ease of access makes it a great place in good conditions to do a few laps, with fantastic views thrown in for good measure. As noted in the safety notes, the route starts at 1000m, which is well within serious mountaineering territory in Hokkaido.

ROUTE TIMING AND NOTES

Expect about 1 hr from the car park to the peak, and then about 30 minutes back down.

TRANSPORT

By car: There is a large parking area just before the large hairpin bend about 1km before the main Nissho Tunnel (日勝トンネル). Note that while there used to be a very obvious snow/avalanche tunnel on this bend, this is no longer there.

Public transport: There are no public transport options.

SAFETY NOTES

As mentioned previously, ease of access to this area via the main Route 274 can give a dangerous false sense of security. Anywhere above 1000m in Hokkaido is a serious winter mountaineering environment, and this is where this route starts. Expect the possibility of ferocious winds (100km+), extreme temperatures (-30degC), and the real risk of avalanche. The

Hidaka Range is particularly susceptible to the formation of large cornices, and this route up Mumei-ho is no exception. Make conservative decisions when conditions are anything less than perfect.

ONSEN NEARBY

If you're headed in the Obihiro direction, then the closest onsen on the way would be the Honomai Super Sento (410yen) in Memuro Town. There's an even closer, super-local public bath in Shimizu Town. If returning to Sapporo, the Hidaka Kogenso Onsen Hotel has a nice enough onsen (500yen per person) in Hidaka Town. ■



PRINTING INSTRUCTIONS

STEP 1

Load your printer with A4 printer paper (210mm x 297mm). If you've only got Letter size (215.9mm x 279.4 mm), just follow the instructions below. You'll achieve an accurate scale, but the map will be clipped a little at the top and bottom.

STEP 2

Open the print window by clicking on File > Print (or hitting Ctrl + P on your keyboard).

STEP 3

Make sure "Actual Size" is selected.

STEP 4

For double-sided printing, select "Print on both sides of paper".

STEP 5

For best results, select the highest quality print option available on your printer (settings will vary).

STEP 6

You won't need this instructions page, so just select the pages that don't include this instruction sheet.

STEP 7

Click "Print".

PLEASE PRINT AT 'ACTUAL SIZE' (NO SCALING)

The 1:25,000 scale used in the map is accurate if the PDF is printed without scaling (i.e., ACTUAL SIZE). Follow the instructions on this page to ensure an accurate rendering of the scale.

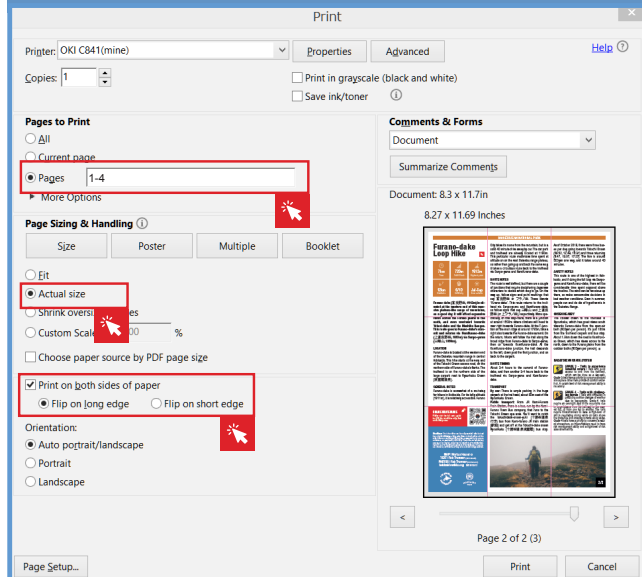


Figure 1. Ensure "Actual Size", and Pages 1-4 are selected (Windows).

ORIGAMI INSTRUCTIONS

