



Yamunai-zawa South Ridge (Rishiri Island)

ヤムナイ沢南尾根 Ski Touring Map 1:25000



0 250 500 750 1000m

1cm on the map equals approx. 250m on the ground
Magnetic declination: 10° 14' W

Map by hokkadowilds.org/Rob Thomson CC BY-SA

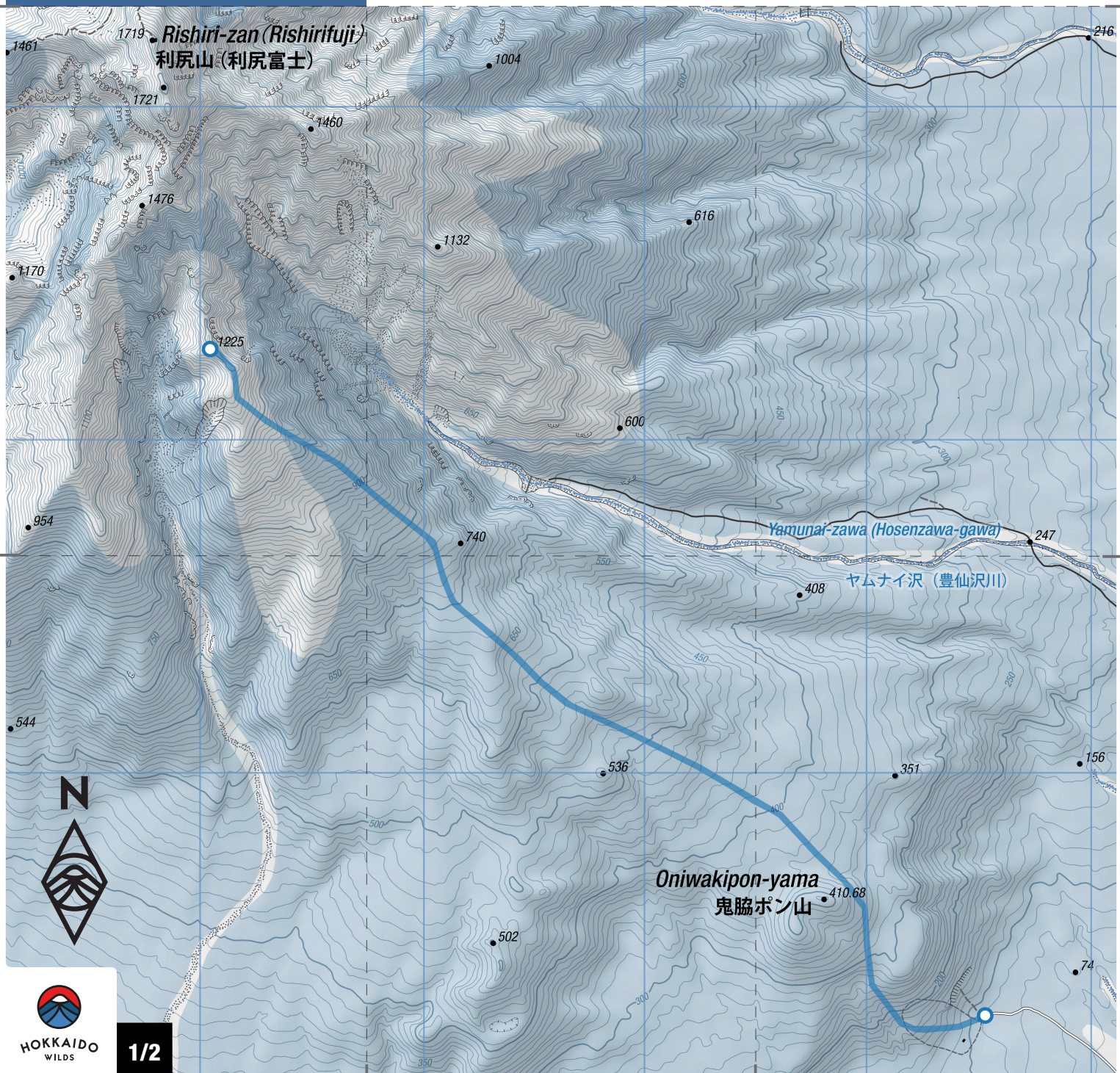
Symbol Key (some may not be present)

- | | | | |
|--------|-----------------------------|------|---------------------------|
| 0:30 → | Route (time between points) | 600 | Contour lines (100m, 10m) |
| | National Highway | | Power transmission lines |
| | Prefectural Road | | Trees/no trees |
| | Municipal Road | | Rocks/cliff |
| | Minor Municipal Road | | Onsen (hot spring) |
| | Walkway | | Fumerole |
| | Bus route (bus stop) | 1022 | Highway number |
| | Avalanche-prone slope | | Designated campsite |
| | | | Hut |

Japanese Map Glossary

Romaji	Kanji	English
bunki	分岐	junction
cho	町	town
dake/mine	岳/峯	peak
eki	駅	station
goya/koya	小屋	hut
hinangoya	避難小屋	shelter
ike	池	pond
kawa/gawa	川	river
kako	火口	crater
ko/mizumi	湖	lake
kyo	峡	gorge
numa	沼	pond
onsen	温泉	hot spring
sawa	沢	stream
taira/daira	平	plateau
tani/dani	谷	valley
taki	滝	waterfall
toge	峠	pass
yama/san/zan	山	mountain

この地図の作成に当たっては、国土地理院長の承認を得て、同院発行の基盤地図情報及び電子地形図（タイトル）を使用した。（承認番号 平 30 情使 第 867 号）。また、1/25,000 植生図 GIS データ（環境省生物多様性センター）も使用し、hokkadowilds.org が作成・加工したものである。
This map uses the Geospatial Information Authority of Japan digital basemap (tiles) and basemap data, with the permission of the Authority's director (permission no. 平 30 情使 第 867 号). It also uses modified 1:25,000 scale vegetation map GIS data created by the Biodiversity Center of Japan, Ministry of the Environment (<http://gis.biodic.go.jp/>).








Yamunai-zawa

South Ridge

(Rishiri Island)

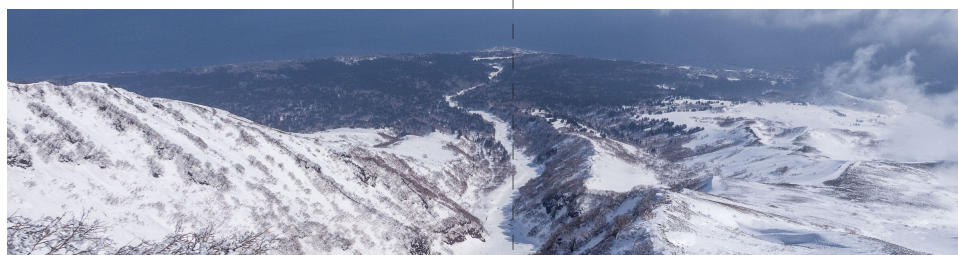


 5hrs Time	 1067m Total Climb	 1225m Highest point
 10km Distance	 7/10 Difficulty	 Mar-Apr Best season

This is a relatively mellow route up to a 1255m prominence on the sheltered southeastern flanks of Rishiri-zan (利尻山, 1721m). It gives full-frontal views of Rishiri-zan's powerful southeastern upper face. Be prepared for world-class alpine scenery on par with the spires of Patagonia and the bulwarks of the Himalayas. If there is a creator, she used this side of Rishiri as a petri dish. The route starts at the old Oniwaki Ski Field, and follows the impressive Yamunai-zawa gully on its upper southern ridge. There's nothing technical on this route, so even intermediate backcountry travelers, in careful consultation with the weather forecast, will enjoy it.

LOCATION

This route is on the southeast side of Rishiri Island, starting from the old Oniwaki Ishiyama Ski Field access road.



GENERAL NOTES

This route up the southeastern flanks of Rishiri-zan is not commonly a route for summiting the mountain (leave that to the icy northern route), but rather a route to make the most of Rishiri's amazing snow, ski-friendly topography, and views. Indeed, the prevailing wind on Rishiri Island is from the northwest, so the southerly aspects of the island will always have more reliably good snow conditions. This route joins up with the Yamunai-zawa gully's southern ridge, which offers some great skiing down to the gully from a number of spots. This route guide, however, sticks to the ridge for an out-and-back trip. The many minor gullies on this broad ridge also offer fantastic skiing.

ROUTE TIMING AND NOTES

This route is not marked. Expect about 4 hours from trailhead to the 1225m peak, and another 1 to 1.5hrs back down. From the end of the snow-clearing head west to the ski area. Traverse diagonally up and across the one single slope, and cut through the trees to the west of the ski slope. From there, wrap around the eastern side of Oniwakipon-yama. Once on the northern side of Oniwakipon-yama, head up the very gradual slope in a northwest direction, keeping to the climber's left of the various humps along the south of the Yamunai-zawa gully. At around 750m, you'll emerge onto the main ridge that will take you to a false summit just before the 1225m peak. To actually get to the 1225m peak, which is about 75m higher than the false summit, you'll need to scramble across a knife-edge ridge and bootpack the final few meters – all with precipitous no-fall drops on both sides. Needless to say, we were quite happy with the false summit, and started our descent from there.

TRANSPORT

By car: There is ample parking in the cleared parking area just before the ski area.

Public transport: There are daily ferries to Rishiri Island, leaving Wakkanai ferry port at 6:55am and 1:55pm between January and April. Tickets cost 2,500yen each way (no extra charge for skis/snowboards). Get to Wakkanai by highway bus or the train, with service from

centers such as Sapporo and Asahikawa.

On Rishiri, there's a local bus running from the Oshidomari ferry terminal (鴛泊フェリーターミナル) to Oniwaki Bus Stop (鬼脇バス停), the 11th stop after the ferry terminal, if taking the A-Course bus (Aコース, clockwise around the island). As of March 2019, buses ran on weekdays at 7:12am, 8:38am, 11:41am, 14:15pm, and 17:21pm from the ferry terminal clockwise around the island. The trip will take about 30 minutes, and will cost 970yen one way. For the return to the ferry terminal, take the B-Course bus (Bコース, anti-clockwise around the island) from Oniwaki Bus Stop back to the ferry terminal. As of March 2019, buses ran at 7:11am, 8:06am, 11:11am, 13:41pm, and 17:26pm.

Taxis are also available at the ferry terminal, but may struggle to take more than a few sets of skis. Guests staying at the Rishiri Green Hill Inn Hostel can request drop-offs and pick-ups from anywhere on the island for a donation.

SAFETY NOTES

While this route is far less exposed than other ridge-line routes on the island, the majority of the route is above the treeline, with few defining features. Make sure to carry reliable navigation tools and know how to use them. Weather is also very changeable on Rishiri Island, with cloud cover largely dependent on wind direction and aspect. It can be pristine blue skies on one side of the island, and thick whiteout fog and cloud on the other. Being in the wild and windy northern Japan Sea, Rishiri is a fearsome place in bad weather – keep plans conservative and flexible.

ONSEN NEARBY

The Rishiri-fuji Onsen (利尻富士温泉保養施設, 500yen) is worth the stop. Note that in winter (November till April) it is open from noon till 9pm, and is not open on Mondays. ■

ONLINE ROUTE GUIDE

Please visit the full route guide for GPS file, interactive map, and extra safety notes: <https://hokw.jp/yamunai>



Disclaimer The information on this map was derived from digital databases provided by the Geospatial Information Authority of Japan and the Biodiversity Center of Japan. Care was taken in the creation of this map. HokkaidoWilds.org cannot accept any responsibility for errors, omissions, or positional accuracy. There are no warranties, expressed or implied, including the warranty of merchantability or fitness for a particular purpose, accompanying this product. However, notification of any errors will be appreciated.

MAP, TEXT, PHOTOS | Rob Thomson

hokkaidowilds.org 2019/03/31

MAP FOLD & LAYOUT CONCEPT | Dominika Gan

Unless indicated otherwise, all content on this PDF (pages 1 to 2) is licensed under a Creative Commons Attribution-ShareAlike 4.0 International License (CC BY-SA 4.0). Please attribute <author-name> (hokkaidowilds.org), and let us know so we can link to your work. E.g., "Photo by Rick Siddie (hokkaidowilds.org)"



PRINTING INSTRUCTIONS

STEP 1

Load your printer with A4 printer paper (210mm x 297mm). If you've only got Letter size (215.9mm x 279.4 mm), just follow the instructions below. You'll achieve an accurate scale, but the map will be clipped a little at the top and bottom.

STEP 2

Open the print window by clicking on File > Print (or hitting Ctrl + P on your keyboard).

STEP 3

Make sure "Actual Size" is selected.

STEP 4

For double-sided printing, select "Print on both sides of paper".

STEP 5

For best results, select the highest quality print option available on your printer (settings will vary).

STEP 6

You won't need this instructions page, so just select the pages that don't include this instruction sheet.

STEP 7

Click "Print".

PLEASE PRINT AT 'ACTUAL SIZE' (NO SCALING)

The 1:25,000 scale used in the map is accurate if the PDF is printed without scaling (i.e., ACTUAL SIZE). Follow the instructions on this page to ensure an accurate rendering of the scale.

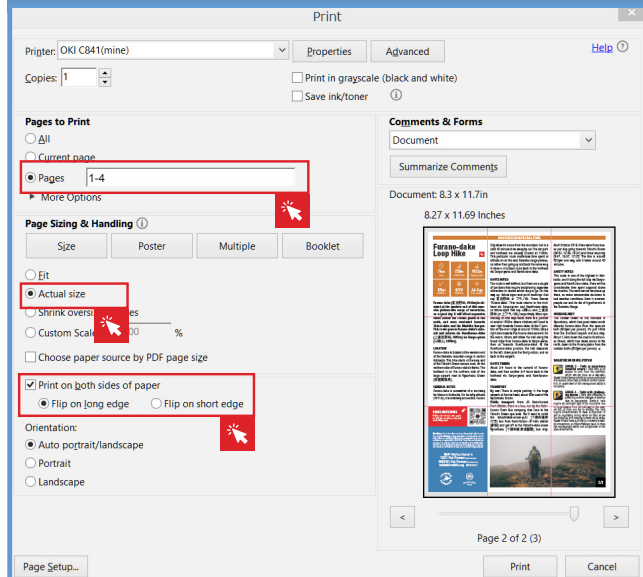


Figure 1. Ensure "Actual Size", and Pages 1-4 are selected (Windows).

ORIGAMI INSTRUCTIONS

