



Yubari-dake Day Hike

夕張岳 Hiking Map 1:25000

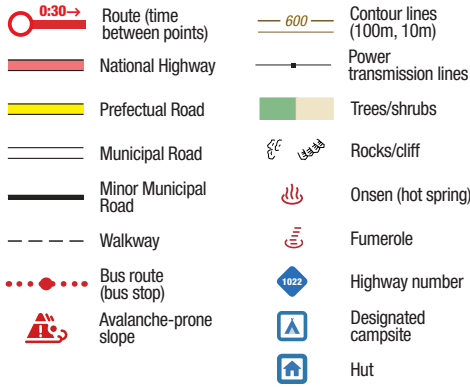


0 250 500 750 1000m

1cm on the map equals approx. 250m on the ground
Magnetic declination: 9° 26' W

Map by hokkadowilds.org/Rob Thomson CC BY-SA 2019/03/12

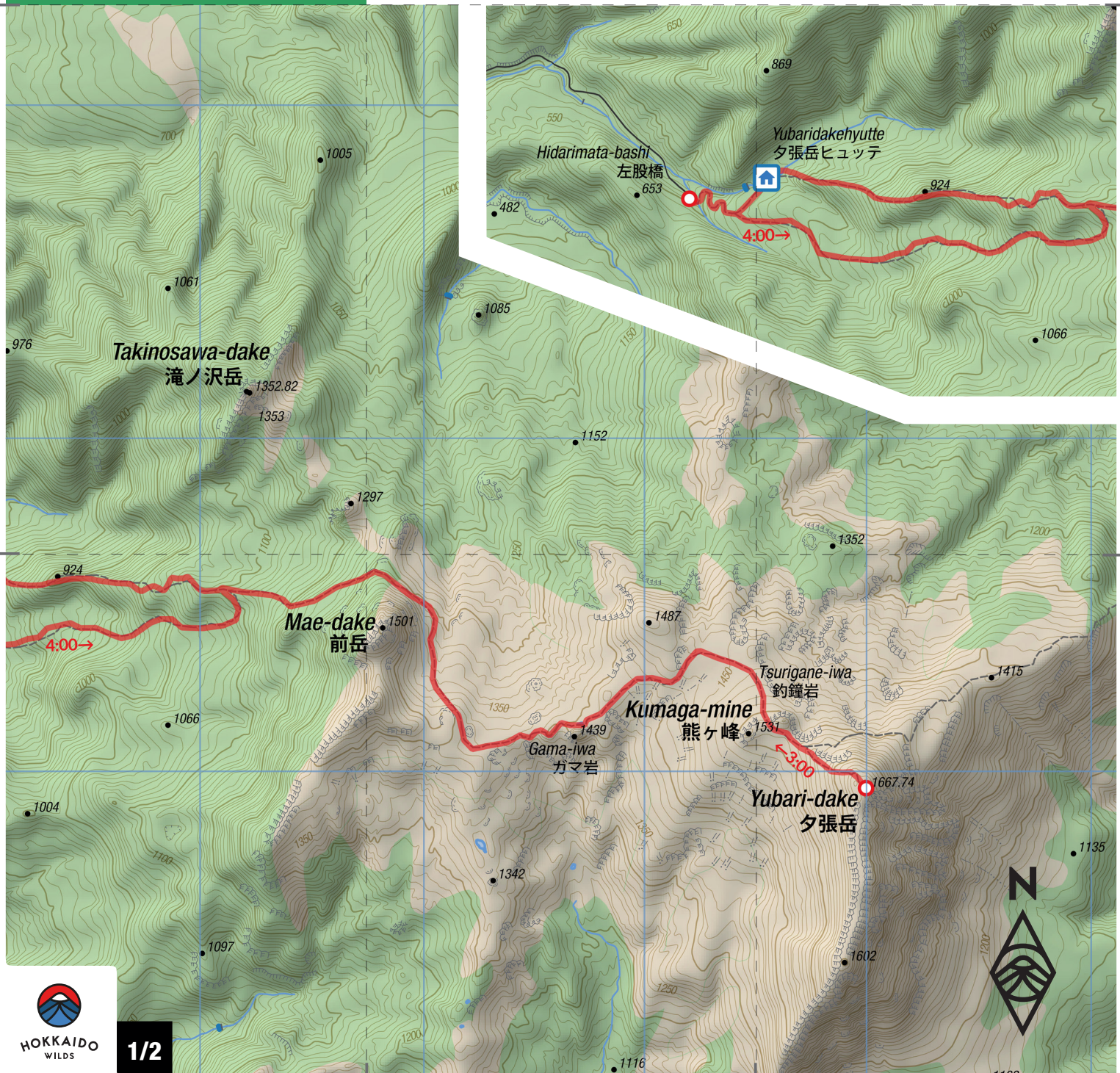
Symbol Key (some may not be present)



この地図の作成に当たっては、国土地理院長の承認を得て、同院発行の基礎地図情報及び電子地形図（タイル）を使用した。（承認番号 平 30 情使、第 867 号）。また、1/25,000 縮尺図 GIS データ（環境省生物多様性センター）も使用し、hokkadowilds.org が作成・加工したものである。
This map uses the Geospatial Information Authority of Japan digital basemap (tiles) and basemap data, with the permission of the Authority's director (permission no. 平 30 情使、第 867 号)。It also uses modified 1:25,000 scale vegetation map GIS data created by the Biodiversity Center of Japan, Ministry of the Environment (<http://gis.biodic.go.jp>).

Japanese Map Glossary

Romaji	Kanji	English
bunki	分岐	junction
cho	町	town
dake/mine	岳/峯	peak
eki	駅	station
goya/koya	小屋	hut
hinangoya	避難小屋	shelter
ike	池	pond
kawa/gawa	川	river
kako	火口	crater
ko/mizumi	湖	lake
kyo	峡	gorge
numa	沼	pond
onsen	温泉	hot spring
sawa	沢	stream
taira/daira	平	plateau
tani/dani	谷	valley
taki	滝	waterfall
toge	峠	pass
yama/san/zan	山	mountain



Yubari-dake Day Hike



7hrs Time	1225m Total Climb	1668m Highest point
13km Distance	6/10 Difficulty	Jul-Sep Best season

Yubari-dake (夕張岳, 1668m) is a rugged, bulky mountain that marks the limit of the broad fertile plain east of Sapporo. Its plateau-like broad upper ridge is home to unique species of flowers in spring and early summer, while in autumn the colours are breathtaking. The summit is surprisingly narrow with spectacular views over wild country in all directions on a clear day, making the long approach well worth the effort. A few hundred metres past the trailhead is the beautifully refurbished Yubari-dake Hütte which would be a great place to stay the night.

LOCATION

Yubari-dake is at the southern end of the central mountain range that runs from the internationally known ski resort at Furano City (a country town in reality) to the old mining town of Yubari east of Sapporo. This hike starts from a trailhead at around 560m at the end of a forest road about 20kms northeast of Yubari City.

GENERAL NOTES

The main season for summer hiking on Yubari-dake is from mid-June to the end of

October, although the forest road may be closed early and late in the season, in which case an additional 10km of walking up and down the road is necessary, taking at least an extra two hours. For instance, in autumn 2018 the gate was closed from the beginning of October. If unsure, check with the local Forest Department (Sorachi Shinrin Kanrishi, 0126-22-1940). The trail proper starts and finishes at the end of the road a few minutes below the hut. There are spaces for a number of cars at a couple of spots but no facilities at the trailhead. The trail soon splits into two routes that rejoin below the main ridge; this description climbs the Hiyamizu Route (冷水コース) and descends the Uma no Se Route (馬の背コース).

ROUTE TIMING AND NOTES

Budget 4hrs from the end of the forestry road to the Yubari-dake summit, and another 3 hours back down.

Overall, The route is well defined through forest, birch shrubs and dwarf juniper, with occasional markers and signs (in Japanese) fixed to trees. On the broad main ridge much of the trail runs along duckboards through marshy areas rich in flowers. From the trailhead the forest road continues for a few hundred metres before the Hiyamizu Route (冷水コース) branches off to the right. Take this then climb steadily through the forest for an hour and a half before a rising traverse left joins up with the ridge and the junction with the Uma no Se trail (馬の背コース). From here there is only one trail that rounds a shoulder past a lookout point and onto the broad main ridge. It passes close to the large rocky outcrop of Gama-iwa (ガマ岩) then continues, often on duckboards, across the plateau to a small col (Fukitoshi 吹き通し) after a couple of hours. From here a short steep climb leads to the summit in about 20 minutes past a small shrine just below the top.

TRANSPORT

By car | Road access is from Route 452 north-east of Yubari, turn right over a bridge across the reservoir after about 10km and follow the generally well maintained forest road. There is parking in a couple of places near the trailhead



YUBARI-DAKE HÜTTE



Details: A new, volunteer-built and funded hut, with a hut keeper present during July-September. Camping beside hut is possible.

Capacity: 30 persons.

Cost: 1500yen per night (500yen for tents).

Contact: Yubari City Education Committee (夕張市教育委員会), TEL: 0123-52-3166.

Booking details: Bookings are taken for groups of 10 or more.

though it can be busy in season.

Public transport | There is no access to the trailhead by public transport. The nearest JR train station is Yubari and it would be necessary to take a taxi from there.

SAFETY NOTES

This is a high and wild mountain and can be a dangerous place in bad weather with real risks of hypothermia for poorly equipped hikers. Conditions can change quickly, it is very exposed to the wind and the upper slopes can be much colder than down at the trailhead. Carry appropriate gear. Like all high mountain areas in Hokkaido this is bear country.

ONSEN NEARBY

There is an onsen in Yubari itself, but if returning to Sapporo there are many options along the way, including Yunni no Yu ユニの湯 at Yuni (650yen, location).



ONLINE ROUTE GUIDE

Please visit the full route guide for GPS file, interactive map, and extra safety notes: <https://hokw.jp/yubhike>



Disclaimer The information on this map was derived from digital databases provided by the Geospatial Information Authority of Japan and the Biodiversity Center of Japan. Care was taken in the creation of this map. HokkaidoWilds.org cannot accept any responsibility for errors, omissions, or positional accuracy. There are no warranties, expressed or implied, including the warranty of merchantability or fitness for a particular purpose, accompanying this product. However, notification of any errors will be appreciated.

TEXT, PHOTOS | Rick Siddle
MAP | Rob Thomson

hokkaidowilds.org 2019/03/12

MAP FOLD & LAYOUT CONCEPT | Dominika Gan

Unless indicated otherwise, all content on this PDF (pages 1 to 2) is licensed under a Creative Commons Attribution-ShareAlike 4.0 International License (CC BY-SA 4.0). Please attribute <author-name> (hokkaidowilds.org), and let us know so we can link to your work. E.g., "Photo by Rick Siddle (hokkaidowilds.org)"



PRINTING INSTRUCTIONS

STEP 1

Load your printer with A4 printer paper (210mm x 297mm). If you've only got Letter size (215.9mm x 279.4 mm), just follow the instructions below. You'll achieve an accurate scale, but the map will be clipped a little at the top and bottom.

STEP 2

Open the print window by clicking on File > Print (or hitting Ctrl + P on your keyboard).

STEP 3

Make sure "Actual Size" is selected.

STEP 4

For double-sided printing, select "Print on both sides of paper".

STEP 5

For best results, select the highest quality print option available on your printer (settings will vary).

STEP 6

You won't need this instructions page, so just select the pages that don't include this instruction sheet.

STEP 7

Click "Print".

PLEASE PRINT AT 'ACTUAL SIZE' (NO SCALING)

The 1:25,000 scale used in the map is accurate if the PDF is printed without scaling (i.e., ACTUAL SIZE). Follow the instructions on this page to ensure an accurate rendering of the scale.

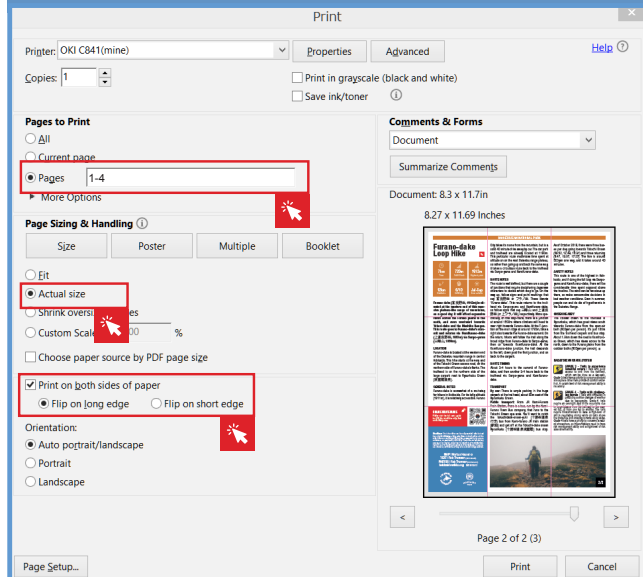


Figure 1. Ensure "Actual Size", and Pages 1-4 are selected (Windows).

ORIGAMI INSTRUCTIONS

