



Lake Toya Nakajima Island Canoeing (via Nakatoya Campground)

洞爺湖中島 Lake Touring Map 1:25000



0 250 500 750 1000m

1cm on the map equals approx. 250m on the ground
Magnetic declination: 9° 32' W

Map by hokkadowilds.org/Rob Thomson CC BY-SA. 2019/07/16

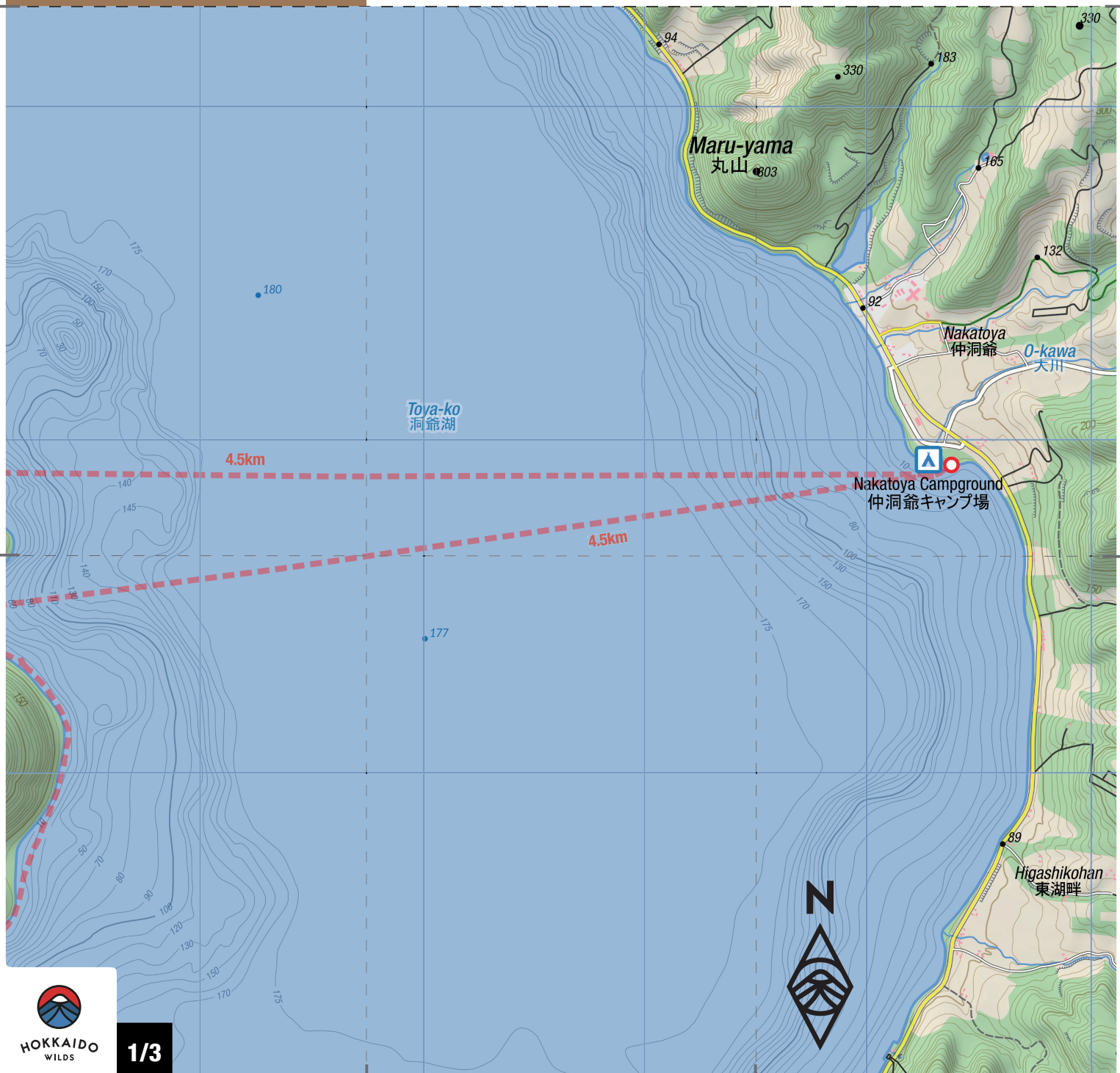
Symbol Key (some may not be present)

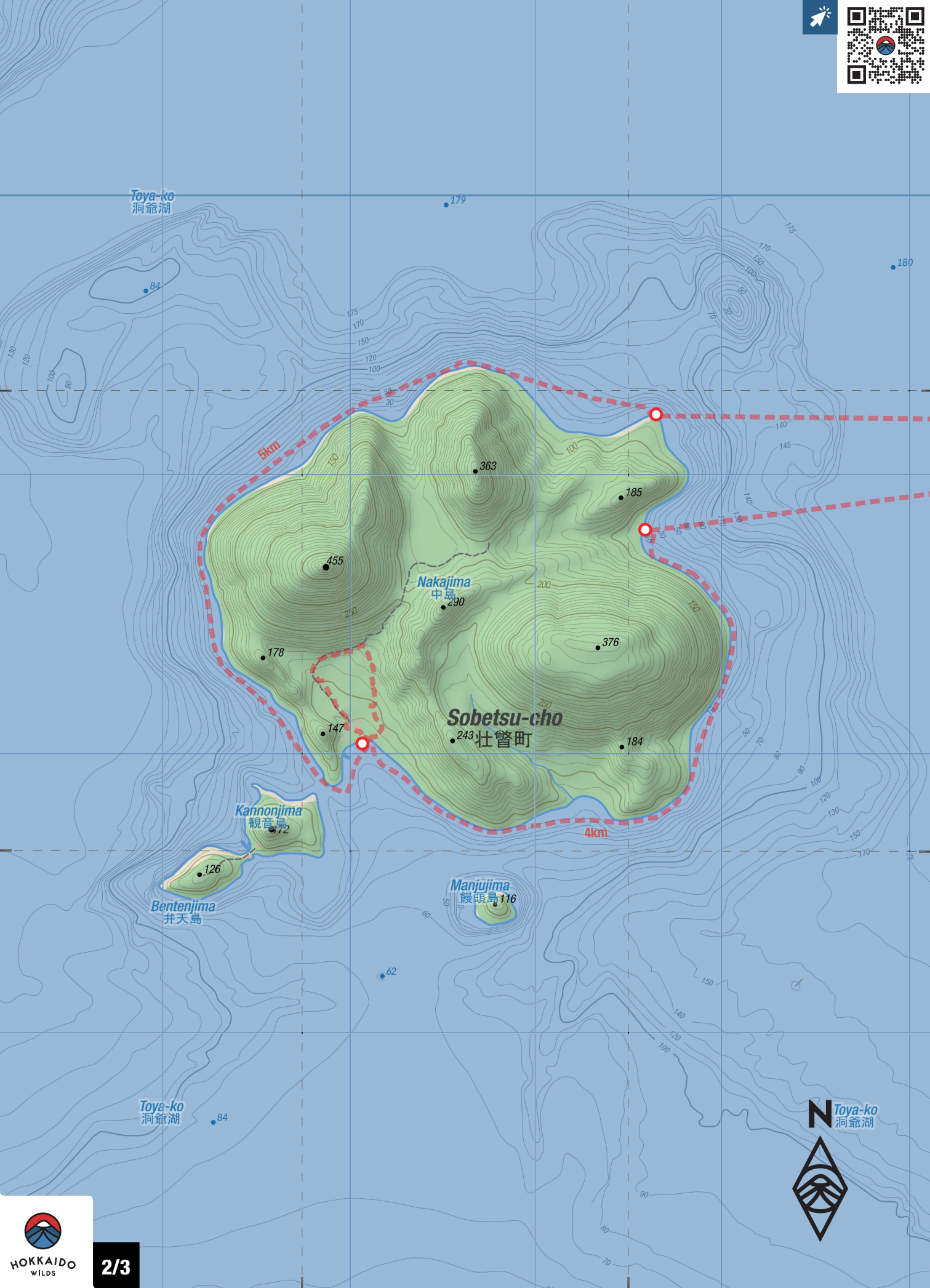
	Route (flow)		Contour lines (100m, 10m)
	National Highway		Power transmission lines
	Prefectural Road		Trees/shrubs
	Municipal Road		Rocks/cliff
	Minor Municipal Road		Onsen (hot spring)
	Walkway		Fumerole
	Bus route (bus stop)		Highway number
	Put in/out location		Designated campsite
	Waterfall		Hut
	Rapids		Portage required

この地図の作成に当たっては、国土地理院長の承認を得て、同院発行の基礎地図情報及び電子地形図（タイル）を使用した。（承認番号 平 30 情使、第 867 号）。また、1/25,000 縮尺図 GIS データ（環境省生物多様性センター）も使用し、hokkadowilds.org が作成・加工したものである。
This map uses the Geospatial Information Authority of Japan digital basemap (tiles) and basemap data, with the permission of the Authority's director (permission no. 平 30 情使、第 867 号). It also uses modified 1:25,000 scale vegetation map GIS data created by the Biodiversity Center of Japan, Ministry of the Environment (<http://gis.biodic.go.jp>).

Japanese Map Glossary

Romaji	Kanji	English
<i>bashi/hashi</i>	橋	bridge
<i>bunki</i>	分岐	junction
<i>cho</i>	町	town
<i>dake/mine</i>	岳/峯	peak
<i>eki</i>	駅	station
<i>goya/koya</i>	小屋	hut
<i>hinangoya</i>	避難小屋	shelter
<i>ike</i>	池	pond
<i>kawa/gawa</i>	川	river
<i>kako</i>	火口	crater
<i>ko/mizumi</i>	湖	lake
<i>kyo</i>	峡	gorge
<i>numa</i>	沼	pond
<i>onsen</i>	温泉	hot spring
<i>sawa</i>	沢	stream
<i>taira/daira</i>	平	plateau
<i>tani/dani</i>	谷	valley
<i>taki</i>	滝	waterfall
<i>toge</i>	峠	pass
<i>yama/san/zan</i>	山	mountain





Lake Toya Nakajima Island

(via Nakatoya Campground)



 6hrs Time	 18km Distance	 7.5/10 Difficulty
 3/5 Remoteness	 4/5 Water clarity	 May-Oct Best season

Lake Toya (洞爺湖) is an expansive caldera lake with a beautiful central island (Nakajima Island 中島) that begs to be explored by canoe. It involves a long and risky 4.5km paddle across open water to get to the island, but the island itself offers birdwatching opportunities and a network of hiking trails. The lake itself is very clear, so paddlers will be treated to some gorgeous shore-side paddling around to the main inlet on the island's southern side.

LOCATION

The put-in location for this trip is at the Nakatoya Campground on the eastern side of Lake Toya, about 60km southwest of Sapporo City. Canoes are only allowed to be put in from the eastern auto-camp section of the campground east of the O-River (大川).

GENERAL NOTES

The center island on Lake Toya has about 2-3hrs worth of hiking trails, along with a

ferry landing, small shop, toilets, and a nature museum (200yen for entry). Making the trek to the island by paddle-craft is a very rewarding endeavour, and is great for fit, strong paddlers. There are also a few smaller islands just across the main bay. Watch out for ferries in this area, but these islands are well worth canoeing around too.

Like most lakes, the wind generally picks up during the day on Lake Toya as the air temperature rises and creates pressure differences due to the colder surface of the lake. Therefore, even if the forecast is for calm weather all day, if you're planning to head to the center island, make it a very early start – around or before 6am is best. Most people will be doing this trip in the summer months, so this early start shouldn't be a problem – the sun will be up at around 4am anyway.

There are a number of campgrounds on the Lake Toya shoreline: Nakatoya Campground (east), Mizube-no-Sato Campground (north), Akebono Campground (north), Ko-Koen Campground (north), and Greenstay Autocamp (west). If you're going to make this an overnight trip, staying at one of the campgrounds, take into consideration the forecasted wind direction when making a choice. The Nakatoya Campground has the most trees, however, so it's our pick of the bunch, all other things considered.

ROUTE TIMING AND NOTES

In total, including a short wander around the tiny settlement on the island, expect to spend about 6 hours for this full route. On a calm day with no wind, expect about one hour of paddling from Nakatoya Campground to the inlet on the eastern side of Naka-jima Island. The central island is about 10km in circumference, so allow at least two hours if planning on circumnavigating it. It is about 4km from the inlet to the ferry landing area – allow just under one hour.

Launch from the Nakatoya Campground, and head straight for the island. The island looks closer than it is, and you'll wonder if it isn't actually moving away from you as you paddle. After about an hour of effort, you'll arrive in a gorgeous small bay, which is a perfect spot for a break. From this bay it is 3km around the coast to the main settlement on the island where there is a small shop, toilets, and the start of a walking trail. Double check the weather, and make the call whether to spend the extra time following the island shore around to this main bay or to head back. To return to the small cove you're currently at from the main bay, it'll be either 3km back around the island the way you came, or 4.5km around the other side of the lake. Assuming you've left early enough to beat the afternoon winds, strong paddlers should be able to circumnavigate the island in around 2 hours. Take care when crossing the main tourist-stop bay, as ferries arrive around every 15 minutes.

By car | There is plenty of free parking around the Nakatoya Campground.

Public transport | The Nakatoya Campground is accessible by bus from Sapporo JR Station, via the Toya Mizu-no-Eki (洞爺水の駅). Your best bet would be to ask at the Sapporo station information center for up to date information, but as of June 2019, there were direct buses to Toya Mizu-no-Eki Bus Stop (洞爺水の駅バス停), leaving at 10:10am, 2:10pm, 4:10pm, and 5:10pm, a trip of about 2.5 hours. From this bus stop, there is a local bus service running to the Higashi-nakatoya Bus Stop (東仲洞爺バス停) next to the Nakatoya Campground, three times a day. Ask at the Mizu-no-Eki for an up to date timetable, but as of June 2019, there were buses going at 6:55am, 1:32pm, and 5:30pm (the last bus only on weekdays).

SAFETY NOTES

Lake Toya is a very large lake by Hokkaido standards, and very exposed to the wind. If your plans involve visiting the center lake, consult the weather before setting off – even by the shortest route from the Toya township, which happens to be a busy ferry route, it is at least 3.5km across to the island. This route in particular involves crossing 4.5km of open water, so is preferably attempted in teams of two or more boats, all with flotation bags, with a strong, experienced paddler in each boat. If caught out in windy conditions, play it safe and paddle downwind to the nearest shore. Landing is possible everywhere, and there is a perimeter road around the entire island, where one could hitch back to the put-in location.

ONSEN NEARBY

This route starts and finishes at the Nakatoya Campground – there's the Nakatoya Onsen (仲洞爺温泉, 420yen) just across the road. ■

ONLINE ROUTE GUIDE

Please visit the full route guide for GPS file, live water levels, and extra safety notes: <https://hokw.jp/nakatoya>



Disclaimer The information on this map was derived from digital databases provided by the Geospatial Information Authority of Japan and the Biodiversity Center of Japan. Care was taken in the creation of this map. HokkaidoWilds.org cannot accept any responsibility for errors, omissions, or positional accuracy. There are no warranties, expressed or implied, including the warranty of merchantability or fitness for a particular purpose, accompanying this product. However, notification of any errors will be appreciated.

MAP, TEXT, PHOTOS | Rob Thomson

hokkaidowilds.org 2019/07/16

MAP FOLD & LAYOUT CONCEPT | Dominika Gan

Unless indicated otherwise, all content on this PDF (pages 1 to 3) is licensed under a Creative Commons Attribution-ShareAlike 4.0 International License (CC BY-SA 4.0). Please attribute <author-name> (hokkaidowilds.org), and let us know so we can link to your work. E.g., "Photo by Rick Siddle (hokkaidowilds.org)"



TRANSPORT

EXTRA DETAILS

Lake Details: This route is on Lake Toya (洞爺湖), which is a natural lake, about 10km wide and 10km long. Lake Toya has a shoreline of 36km, a maximum depth of 179m and an average depth of 117m. Water clarity (visibility) is 17m, and surface elevation is 84m.

Campground: *Nakatoya Campground* - Nakatoya Campground is a large, tree-covered campground located on the eastern side of Lake Toya, on the very opposite side of the lake to the Lake Toya village. There's an onsen right next to the campground. Canoes and kayaks can only be launched from the shoreline adjacent to the autocamp section of the campground.

PRINTING INSTRUCTIONS

STEP 1

Load your printer with A4 printer paper (210mm x 297mm). If you've only got Letter size (215.9mm x 279.4 mm), just follow the instructions below. You'll achieve an accurate scale, but the map will be clipped a little at the top and bottom.

STEP 2

Open the print window by clicking on File > Print (or hitting Ctrl + P on your keyboard).

STEP 3

Make sure "Actual Size" is selected.

STEP 4

For double-sided printing, select "Print on both sides of paper".

STEP 5

For best results, select the highest quality print option available on your printer (settings will vary).

STEP 6

You won't need this instructions page, so just select the pages that don't include this instruction sheet.

STEP 7

Click "Print".

PLEASE PRINT AT 'ACTUAL SIZE' (NO SCALING)

The 1:25,000 scale used in the map is accurate if the PDF is printed without scaling (i.e., ACTUAL SIZE). Follow the instructions on this page to ensure an accurate rendering of the scale.

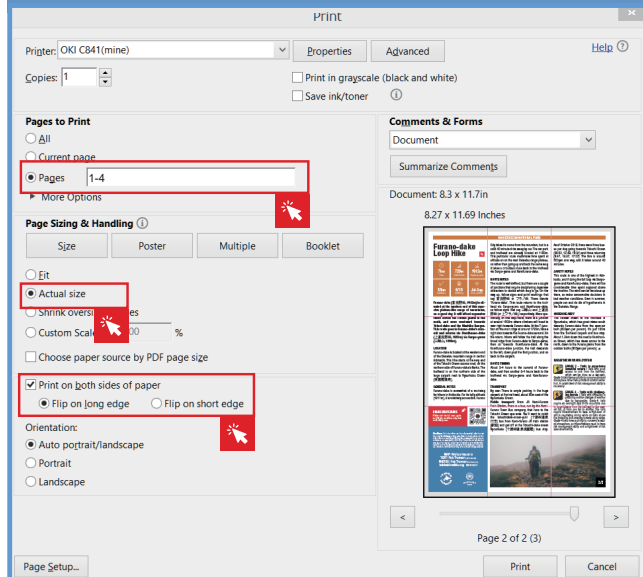


Figure 1. Ensure "Actual Size", and Pages 1-4 are selected (Windows).

ORIGAMI INSTRUCTIONS

