



# Bozu-yama (Horokanai)

幌加内坊主山 Ski Tour Map 1:25000



0 250 500 750 1000 m

1cm on the map equals 250m on the ground  
Magnetic declination: 9° 44' W

Map by [hokkaidowilds.org](http://hokkaidowilds.org) CC BY SA 2019/11/25

## Symbol Key (some may not be present)

	Route (time between points)		Contour lines (100m, 10m)
	National Highway		Power transmission lines
	Prefectural Road		Trees/shrubs
	Municipal Road		Rocks/cliffs
	Minor Municipal Road		Onsen (hot spring)
	Walkway		Fumerole
	Designated campsite		Highway number
			Hut



**ONLINE ROUTE GUIDE** - Please visit the full route guide for route description, GPS file, and safety notes: <https://hokw.jp/horoboz>

**THIS IS A GEOREFERENCED PDF** - Download the free Avenza Maps® app for iPhone and Android to see your location in real time: <https://hokw.jp/geobos>

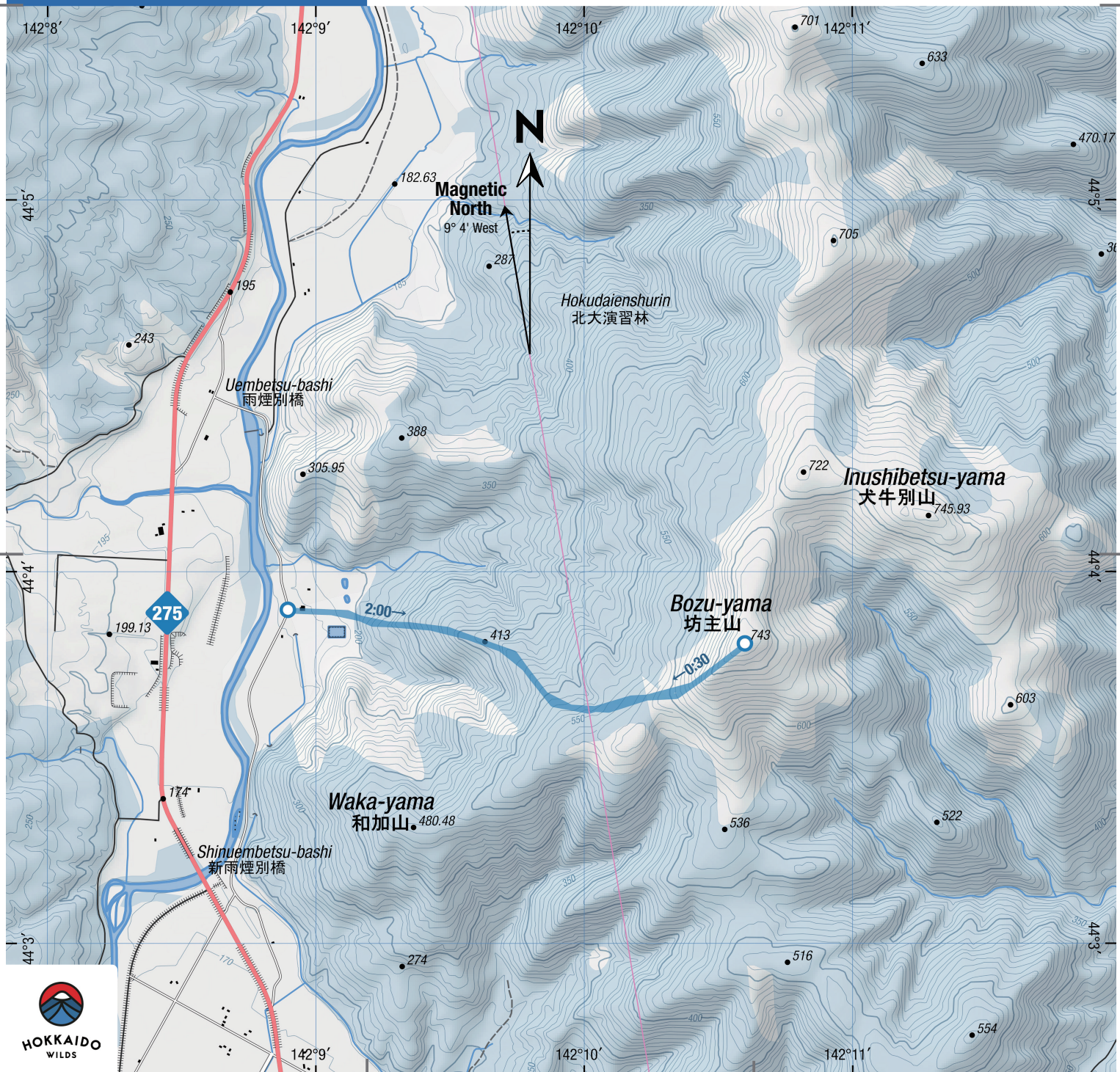


## Japanese Map Glossary

Romaji	Kanji	English
bunki cho	分岐町	junction town
dake/mine eki	岳/峯駅	peak station
goya/koya	小屋	hut
hinangoya	避難小屋	shelter
ike	池	pond
kawa/gawa	川	river
kako	火口	crater
ko/mizumi	湖	lake
kyo	峡	gorge
numa	沼	pond
onsen	温泉	hot spring
sawa	沢	stream
taira/daira	平	plateau
tani/dani	谷	valley
taki	滝	waterfall
toge	峠	pass
yama/san/zan	山	mountain

この地図の作成に当たっては、国土地理院長の承認を得て、同院発行の基盤地図情報及び電子地形図(タイル)を使用した。(承認番号平30情使、第867号)。また、1/25,000種生図GISデータ(環境省生物多様性センターも使用し、hokkaidowilds.orgが作成・加工したものである)。

We created this map using the Geospatial Information Authority of Japan digital basemap (tiles) and basemap data, with the Authority director's permission (no. Hei-30-joshi, dai-867go). We also modified 1:25000 scale vegetation map data created by the Biodiversity Center of Japan (<http://gis.biodic.go.jp>).





# Bozu-yama (Horokanai)



 <b>2.5hrs</b> Time	 <b>533m</b> Total Climb	 <b>743m</b> Highest point
 <b>5km</b> Distance	 <b>5/10</b> Difficulty	 <b>Dec-Apr</b> Best season

**Bozu-yama in Horokanai (幌加内坊主山, 743m)** is a distinctive peak, visible from the quiet central Horokanai streets. Likely to appeal to both seasoned experts and the less experienced, it offers some excellent dry powder skiing on short but infinitely lappable slopes from its mostly tree-less peak. There's no long forestry road approach either, so snowboarders on snowshoes will have plenty of fun on this route too. Expect inspiring views of the plains of Horokanai below - home not only of the coldest ever recorded temperature in Japan, a frigid  $-41.2^{\circ}\text{C}$ , but also the lowest population density of any town in Japan.

## LOCATION

Bozu-yama is located just north of central Horokanai, about 60km north of Asahikawa City. The most common route up the mountain in winter starts just outside the Horokanai garbage sorting facility

## ONLINE ROUTE GUIDE

Please visit the full route guide for GPS file, interactive map, and extra safety notes: <https://hokw.jp/horoboz>



**Disclaimer** The information on this map was derived from digital databases provided by the Geospatial Information Authority of Japan and the Biodiversity Center of Japan. Care was taken in the creation of this map. HokkaidoWilds.org cannot accept any responsibility for errors, omissions, or positional accuracy. There are no warranties, expressed or implied, including the warranty of merchantability or fitness for a particular purpose, accompanying this product. However, notification of any errors will be appreciated.

MAP, TEXT, PHOTOS | Rob Thomson

[hokkaidowilds.org](http://hokkaidowilds.org) 2019/03/12

MAP FOLD & LAYOUT CONCEPT | Dominika Gan

Unless indicated otherwise, all content on this PDF (pages 1 to 2) is licensed under a Creative Commons Attribution-ShareAlike 4.0 International License (CC BY-SA 4.0). Please attribute <author-name> (hokkaidowilds.org), and let us know so we can link to your work. E.g., "Photo by Rick Siddle (hokkaidowilds.org)"



## GENERAL NOTES

Backcountry skiers come to this quiet town in winter seeking some of the driest, coldest powder in Hokkaido. The stats don't lie, with the February average low hovering at  $-15^{\circ}\text{C}$ . Despite these cold temperatures, on average, 1348cm of snow falls in any given year in Horokanai Town. Compare this to Kutchan's (Niseko) February average low of  $-10^{\circ}\text{C}$ . This all adds up to Horokanai and its surrounding hills being one of the most overlooked areas in Hokkaido for great powder skiing.

Most of the action happens in the one long valley, with multiple options in the hills on either side. Bozu-yama is a relatively low hill, but has some great skiing from the summit either on the western or eastern faces. There are a number of other peaks called Bozu-yama in Japan, so that's why you'll often see this particular peak with 'Horokanai' in front of it. 'Bozu', by the way, is a word referring to a buzz-cut haircut. Bozu-yama fits this description, with a rounded, mostly tree-less peak.

## ROUTE TIMING AND NOTES

The route is not marked. Expect up to 2hrs from the garbage sorting facility to the Bozu-yama peak, then just over 30 mins back down.

## TRANSPORT

**By car:** There is a small area on the opposite side of the road near the entrance to the garbage sorting facility. Be prepared to clear more room on the side of the road with your shovels if necessary.

**Public transport:** The closest you'll get on public transport is the Kamihorokanai Bus stop, about 3.5km from the garbage sorting facility. This bus stop is about 1hr 30mins north of Fukagawa City on the JR Hokkaido

bus bound for Nayoro City. It would cost about 1,250yen one way.

## SAFETY NOTES

The main safety concern on this route is ending up on the wrong ridge on the descent. Make sure to keep to the main broad eastern ridge – the same as you came up on. Also take care in low visibility conditions. The main ridge is broad and undefined at times.

## ONSEN NEARBY

Just up the road is the excellent Seiwa Onsen, next to the michi-no-eki. At 500yen per person, there's an attached soba restaurant, plus sauna and outdoor baths. ■



## PRINTING INSTRUCTIONS

### STEP 1

Load your printer with A4 printer paper (210mm x 297mm). If you've only got Letter size (215.9mm x 279.4 mm), just follow the instructions below. You'll achieve an accurate scale, but the map will be clipped a little at the top and bottom.

### STEP 2

Open the print window by clicking on File > Print (or hitting Ctrl + P on your keyboard).

### STEP 3

Make sure "Actual Size" is selected.

### STEP 4

For double-sided printing, select "Print on both sides of paper".

### STEP 5

For best results, select the highest quality print option available on your printer (settings will vary).

### STEP 6

You won't need this instructions page, so just select the pages that don't include this instruction sheet.

### STEP 7

Click "Print".

## PLEASE PRINT AT 'ACTUAL SIZE' (NO SCALING)

The 1:25,000 scale used in the map is accurate if the PDF is printed without scaling (i.e., ACTUAL SIZE). Follow the instructions on this page to ensure an accurate rendering of the scale.

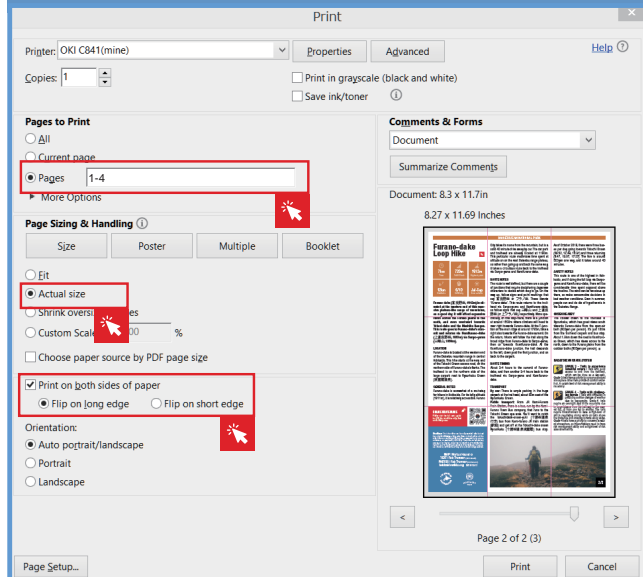


Figure 1. Ensure "Actual Size", and Pages 1-4 are selected (Windows).

## ORIGAMI INSTRUCTIONS

