



Dairoku-yama Northern Ridge

大麓山北尾根 Ski Tour Map 1:25000

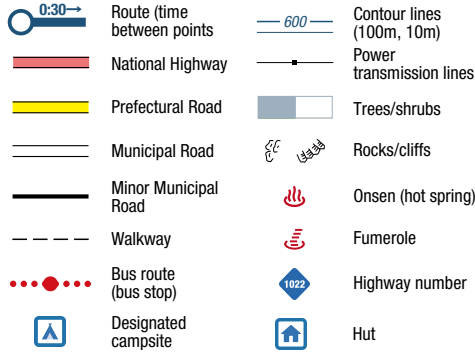


0 250 500 750 1000 m

1cm on the map equals 250m on the ground
Magnetic declination: 9° 33' W

Map by hokkaidowilds.org CC BY SA 2020/03/12

Symbol Key (some may not be present)



ONLINE ROUTE GUIDE - Please visit the full route guide for route description, GPS file, and safety notes: <https://hokw.jp/dairok>

THIS IS A GEOREFERENCED PDF - Download the free Avenza Maps® app for iPhone and Android to see your location in real time: <https://hokw.jp/geodrk>

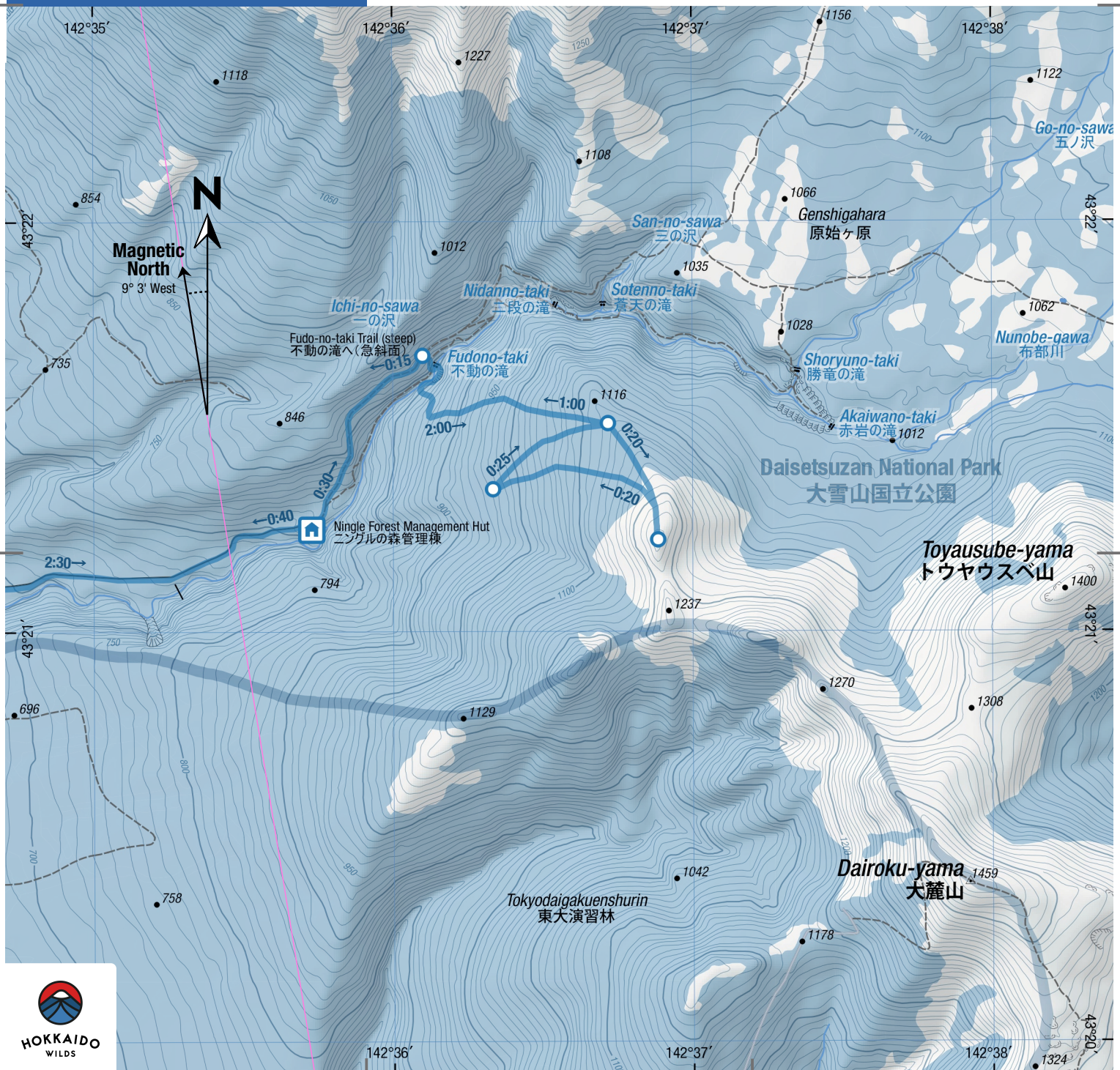


Japanese Map Glossary

Romaji	Kanji	English
bunki	分岐	junction
cho	町	town
dake/mine	岳/峯	peak
eki	駅	station
goya/koya	小屋	hut
hinangoya	避難小屋	shelter
ike	池	pond
kawa/gawa	川	river
kako	火口	crater
ko/mizumi	湖	lake
kyo	峡	gorge
numa	沼	pond
onsen	温泉	hot spring
sawa	沢	stream
taira/daira	沢平	plateau
tani/dani	谷	valley
taki	滝	waterfall
toge	峠	pass
yama/san/zan	山	mountain

この地図の作成に当たっては、国土地理院長の承認を得て、同院発行の基礎地図情報及び電子地形図(タイル)を使用した。(承認番号平30情使、第867号)。また、1/25,000縮尺生図GISデータ(環境省生物多様性センターも使用し、hokkaidowilds.orgが作成・加工したものである)。

We created this map using the Geospatial Information Authority of Japan digital basemap (tiles) and basemap data, with the Authority director's permission (no. Hei-30-jishi, dai-867go). We also modified 1:25,000 scale vegetation map data created by the Biodiversity Center of Japan (<http://gis.biodic.go.jp/>).



Ningle Forest Management Hut Winter Access Route

ニンゲルの森管理棟 (冬) Ski Tour Map 1:25000

0 250 500 750 1000 m

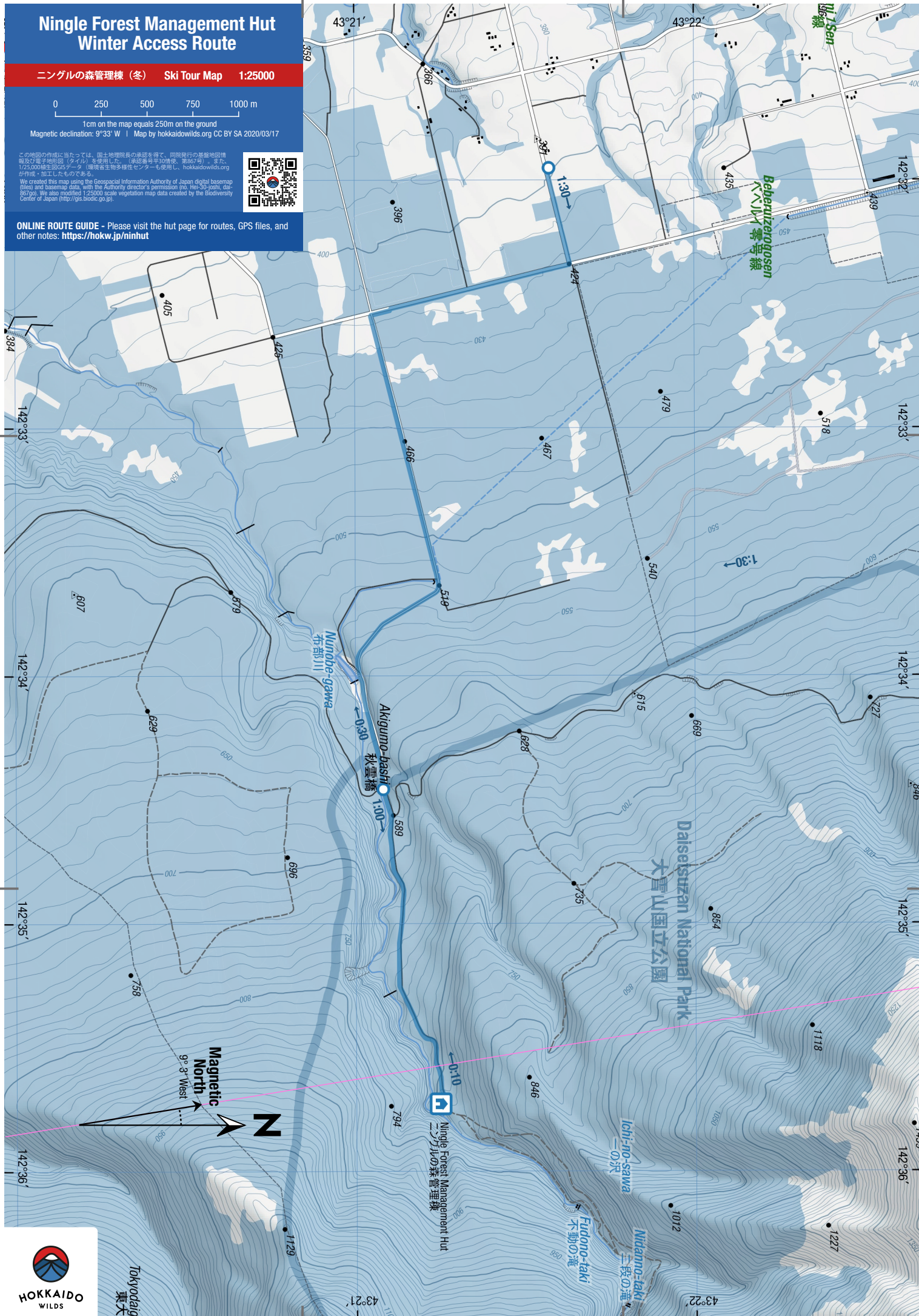
1cm on the map equals 250m on the ground

Magnetic declination: 9°33' W | Map by hokkaidowilds.org CC BY SA 2020/03/17

この地図の作成に当たっては、国土地理院長の承認を得て、同院発行の基礎地図情報
報及び電子地形図（タイル）を使用した。（承認番号平30情保、第867号）。また、
1/25,000地形図25メートル（環境省生物多様性センターも使用し、hokkaidowilds.org
が作成・加工したものである）
We created this map using the Geospatial Information Authority of Japan digital basemap
tiles and basemap data, with the Authority director's permission (no. Hai-30-joshi, dat-
86790). We also modified 1:25,000 scale vegetation map data created by the Biodiversity
Center of Japan (<http://gis.biodic.go.jp/>).



ONLINE ROUTE GUIDE - Please visit the hut page for routes, GPS files, and
other notes: <https://hokw.jp/ninhut>



Dairoku-yama Nth. Ridge



6hrs Time	965m Total Climb	1216m Highest point
18km Distance	8/10 Difficulty	Jan-Apr Best season

Dairoku-yama (大麓山, 1459m) is a remote, lonely peak in deep winter. Not many people will stand on its summit in the snowy season. However, this multi-peaked massif is home to a number of remote slopes, most with very well spaced trees, on multiple aspects. Access from the Ningle Forest Management Hut is via a tricky clamber across a stream near the hut.

LOCATION

Dairoku-yama sits to the south of Furano-dake and Maefurano-dake, at the southwestern end of the Daisetsuzan Range in central Hokkaido. In deep winter, skiers will need to travel from a closed road gate across 6.5km of very gently ascending terrain before getting to the Ningle Forest Management Hut and then ascend from there.

GENERAL NOTES

The descent down to the Fudo-no-taki (不動の滝), Nunobe-gawa creek (布部川) crossing and subsequent scramble up to the main ridge is a bit of a gong show on this route. The actual northern ridge has some

lovely skiing, and the Fudo-no-taki waterfall is impressive, but the approach definitely verges on Type-2 fun. Hence, this route is not, by any stretch of the imagination, a practical or highly recommended route. It is the result of having a full spare day at the Ningle Forest Management Hut, waiting for the weather to clear for an attempt on the summit of Maefurnao-dake.

If attempting this route, please accept that it is well and truly in a beta-stage of development. It requires considerable clambering up small sections of rocky cliff. Nothing involves anything even approaching exposure to a life-threatening fall, but skiers will need to be open-minded, fit, and creative.

ROUTE TIMING AND NOTES

This route is not marked. Expect about 4-5 hours from road-end to the 1200m point, and then about 2hrs back to the road-end. Our route timings here assume you're carrying (or pulling) overnight gear to the hut. If doing this as a daytrip, one might be able to shave off an hour or so.

Access the Ningle Forest Management Hut as per the details on the Maefurano-dake route overview. From the hut, head up the upper summer hiking trail towards the Genshi-ga-hara plateau. In about 1km, drop down to below the Fudo-no-taki. This is a moderately steep ski through trees for 50m or so, then a very steep (but short) drop down to the creek proper. When we were there in March 2020, there was a makeshift bridge made of large logs straddling the creek just below the waterfall. We easily skinned across this on an ample-wide covering of snow. From the waterfall, traverse along the far side of the creek downstream for about 150m. Space between the ravine wall and the stream will be tight in places. The crux comes at the end of the 150m, with a scramble 'gap'. Brush snow out of the way to find handholds to push yourself upwards, and grab onto the saplings on the other side to haul yourself across. We did this with skis still attached to boots. In March 2020, falling here would simply have meant a soft landing in snow, with an easy short 2m re-ascent. Your mileage may differ depending on snow conditions.

Once past the crux, it's a steep zig-zag ascent on good snow, through a messy wind-fall strewn forest. Soon enough the forest will transform into slopes with well-spaced old-growth trees. Follow the ridge up to around the 1200m knob. After a few laps, on aspects suited to the conditions, the final return is back the way you came. The crux point on the descent is as befuddling as it was on the ascent, but not impossible. Once across the stream near the waterfall, the steep, short climb back up to the summer trail is the final crux of the route. Some in our party opted to bootpack, some managed to cut a steep skin-track. Follow the summer trail back to the hut.

TRANSPORT

By car: There is roadside parking at the road-

closed gate (see online guide). Park well to the side of the road, and don't park too close to the gate, as snow-clearing equipment uses this area to turn around. You may need to spend 15 minutes or so clearing your own parking space off the side of the road.

Public transport: There are no public transport options for this route.

SAFETY NOTES

This route is best suited to a party with at least one experienced ski tourer, accustomed to problem-solving in the outdoors - the creek-crossing involves plenty of scrambling. Also note that this is a very remote route. Given the difficult and long access, any foot rescue will be a long time coming - skiers need to be self-reliant, prepared, and experienced with difficult backcountry travel.

ONSEN NEARBY

From the winter trailhead, the closest onsen is Furano La Terre (ふらのラテール, 980yen). It's about 14km (20mins) from the trailhead. There's indoor baths, a cave bath, outdoor baths - it's a huge facility. It also has an attached restaurant. If you're headed further into central Hokkaido, then it would be worth making the extra 20 minutes drive up the mountain to the Tokachi Onsen area. Ryounkaku (凌雲閣, 800yen) at the end of the road arguably has one of the most epic outdoor onsen views in Hokkaido. Of course there's good old Hakuginso (白銀荘, 700yen for a soak). And for the adventurous, there's the Fukiage Onsen free wild onsen just down the road from Hakuginso (吹上温泉, free). ■



NINGLE FOREST
MANAGEMENT HUT



Details: Available to general public upon application - call Furano City Council to arrange key pickup. Good wood-burning stove (wood supplied), interior toilets, well maintained and upkept.

Capacity: 30 persons.

Cost: Free.

Contact: Furano City Council, TEL: 0167-39-2312.

ONLINE ROUTE GUIDE

Please visit the full route guide for GPS file, interactive map, and extra safety notes: <http://bit.ly/dairok>



Disclaimer The information on this map was derived from digital databases provided by the Geospatial Information Authority of Japan and the Biodiversity Center of Japan. Care was taken in the creation of this map. HokkaidoWilds.org cannot accept any responsibility for errors, omissions, or positional accuracy. There are no warranties, expressed or implied, including the warranty of merchantability or fitness for a particular purpose, accompanying this product. However, notification of any errors will be appreciated.

MAP, TEXT, PHOTOS | Rob Thomson

hokkaidowilds.org 2020/03/17

MAP FOLD & LAYOUT CONCEPT | Dominika Gan

Unless indicated otherwise, all content on this PDF (pages 1 to 1) is licensed under a Creative Commons Attribution-ShareAlike 4.0 International License (CC BY-SA 4.0). Please attribute <author-name> (hokkaidowilds.org), and let us know so we can link to your work. E.g., "Photo by Rick Siddie (hokkaidowilds.org)"



PRINTING INSTRUCTIONS

STEP 1

Load your printer with A4 printer paper (210mm x 297mm). If you've only got Letter size (215.9mm x 279.4 mm), just follow the instructions below. You'll achieve an accurate scale, but the map will be clipped a little at the top and bottom.

STEP 2

Open the print window by clicking on File > Print (or hitting Ctrl + P on your keyboard).

STEP 3

Make sure "Actual Size" is selected.

STEP 4

For double-sided printing, select "Print on both sides of paper".

STEP 5

For best results, select the highest quality print option available on your printer (settings will vary).

STEP 6

You won't need this instructions page, so just select the pages that don't include this instruction sheet.

STEP 7

Click "Print".

PLEASE PRINT AT 'ACTUAL SIZE' (NO SCALING)

The 1:25,000 scale used in the map is accurate if the PDF is printed without scaling (i.e., ACTUAL SIZE). Follow the instructions on this page to ensure an accurate rendering of the scale.



Figure 1. Ensure "Actual Size", and Pages 1-4 are selected (Windows).

ORIGAMI INSTRUCTIONS

