



# Kamuinupuri (Mashu-dake) Akan-Mashu National Park

カムイヌプリ(摩周岳)

Hiking Map 1:25000



0 250 500 750 1000 m  
1cm on the map equals 250m on the ground  
Magnetic declination: 9° 11' W

Map by [hokkaidowilds.org](http://hokkaidowilds.org) CC BY SA 2020/04/02

## Symbol Key (some may not be present)

	Route (time between points)		Contour lines (100m, 10m)
	National Highway		Power transmission lines
	Prefectural Road		Trees/shrubs
	Municipal Road		Rocks/cliffs
	Minor Municipal Road		Onsen (hot spring)
	Walkway		Fumerole
	Bus route (bus stop)		Highway number
	Designated campsite		Water
	Hut		



**ONLINE ROUTE GUIDE** - Please visit the full route guide for route description, GPS file, and safety notes: <https://hokw.jp/kamuin>

**THIS IS A GEOREFERENCED PDF** - Download the free Avenza Maps® app for iPhone and Android to see your location in real time: <https://hokw.jp/geokamu>

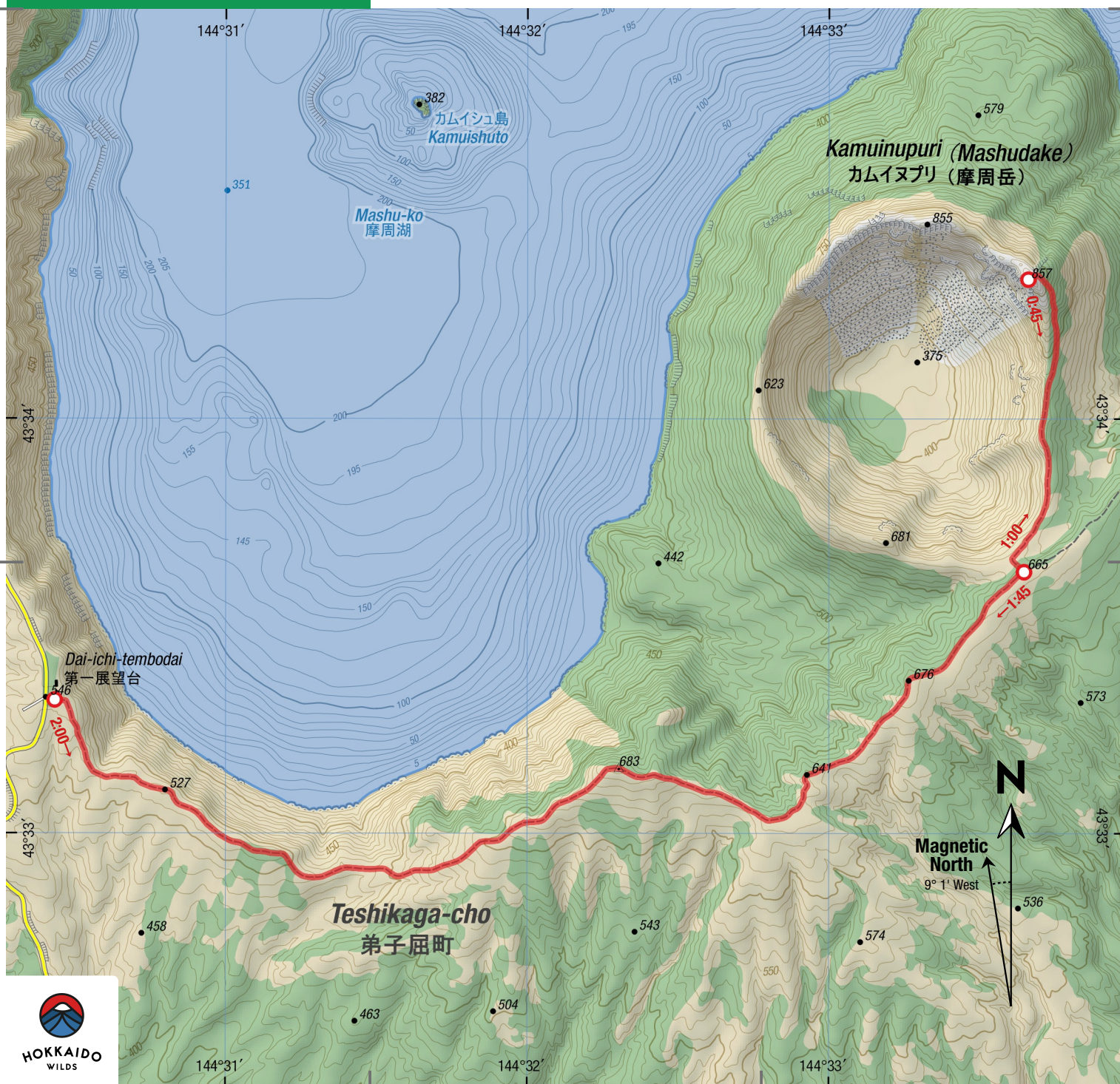


## Japanese Map Glossary

Romaji	Kanji	English
bunki	分岐	junction
cho	町	town
dake/mine	岳/峯	peak
eki	駅	station
goya/koya	小屋	hut
hinangoya	避難小屋	shelter
ike	池	pond
kawa/gawa	川	river
kako	火口	crater
ko/mizumi	湖	lake
numa	沼	gorge
onsen	温泉	pond
sawa	沢	hot spring
taira/daira	平	stream
tani/dani	谷	plateau
taki	滝	valley
toge	峠	waterfall
yama/san/zan	山	pass
		mountain

この地図の作成に当たっては、国土地理院長の承認を得て、同院発行の基盤地図情報及び電子地形図(タイル)を使用した。(承認番号平30情使、第867号)。また、1/25,000植生図GISデータ(環境省生物多様性センターも使用し、hokkaidowilds.orgが作成・加工したものである)。

We created this map using the Geospatial Information Authority of Japan digital basemap (tiles) and basemap data, with the Authority director's permission (no. Hei-30-joshi, dai-867go). We also modified 1:25000 scale vegetation map data created by the Biodiversity Center of Japan (<http://gis.biodic.go.jp/>).





# Kamuinupuri (Mashu-dake) Hike



5.5hrs Time	539m Total Climb	857m Highest point
14km Distance	4/10 Difficulty	May-Nov Best season

**Kamuinupuri (カムイヌプリ, 857m, also known as Mashu-dake 摩周岳) lies on a jagged ridge forming the east rim of the much photographed caldera lake of Mashu-ko (摩周湖), one of the iconic scenes of Hokkaido. It can be easily climbed by a trail that follows the rim of this spectacular lake through meadows of flowers before climbing steeply up a narrowing ridge. The airy summit gives dramatic views of the lake and a secondary volcanic crater on one side and the broad rolling vistas typical of Hokkaido's far east on the other. The lake is famous for often being covered in mist so try to pick a fine day!**

## LOCATION

Kamuinupuri is the peak beside the crater lake of Mashu-ko, in eastern Hokkaido to the north of the small town of Teshikaga 弟子屈. The trailhead is at the popular No.1 Viewpoint 第一展望台 (facilities and toilets, 546m) above the lake on local Route 52 out of Teshikaga.

## ONLINE ROUTE GUIDE

Please visit the full route guide for GPS file, interactive map, and extra safety notes: <https://hokw.jp/kamuin>



**Disclaimer** The information on this map was derived from digital databases provided by the Geospatial Information Authority of Japan and the Biodiversity Center of Japan. Care was taken in the creation of this map. HokkaidoWilds.org cannot accept any responsibility for errors, omissions, or positional accuracy. There are no warranties, expressed or implied, including the warranty of merchantability or fitness for a particular purpose, accompanying this product. However, notification of any errors will be appreciated.

**TEXT, PHOTOS** | Rick Siddle  
**MAP** | Rob Thomson

[hokkaidowilds.org](https://hokkaidowilds.org) 2020/04/03

MAP FOLD & LAYOUT CONCEPT | Welldonegan

Unless indicated otherwise, all content on this PDF (pages 1 to 1) is licensed under a Creative Commons Attribution-ShareAlike 4.0 International License (CC BY-SA 4.0). Please attribute <author-name> (hokkaidowilds.org), and let us know so we can link to your work. E.g., "Photo by Rick Siddle (hokkaidowilds.org)"



## GENERAL NOTES

*Kamuy* is the Ainu word commonly translated as god or spirit in English, though these concepts are understood a little differently in the animistic religion of the Ainu people. *Nupuri* is one of the Ainu terms for mountain. The origin of Mashu may lie in the image of shadows across the cauldron-like lake (Hokkaido Natsuyama Gaido 6, p. 78). The summer hiking season is from May into November. There is no hut on this route, though it would be straightforward to continue on to and over Nishibetsu-dake from the trail junction and stay in the Nishibetsu Hut at the trailhead there.

## ROUTE NOTES

Hikers should expect about 3 hours for the climb from the carpark to the Kamuinupuri summit, and another 2.5 hours back down. The trail starts at the south end of the car park at the trailhead, and is well defined and sign-posted.

The first section follows the gently undulating ridge that forms the southern rim of the caldera and is lined with sasa dwarf bamboo and wildflowers in spring and early summer. It bends round to the north to meet a junction with the trail leading to Nishibetsu-dake 西別岳 on the right after a couple of hours or so. Continue straight on to climb more steeply up a narrowing ridge next to a secondary crater on your left, reaching the summit in another hour or less. The summit itself is narrow and airy with steep drops down into the crater. Return the same way.

## TRANSPORT

**By car:** Take local Route 52 northeast out of Teshikaga for about 10km to the large car park at the No.1 Viewpoint 第一展望台. In high season this can be very busy and charges may

apply.

**Public transport:** Between April and November (as of 2019) Akan Bus Company (TEL: 0154-37-2221) runs a service to No.1 Viewpoint 第一展望台 leaving Mashu JR Train Station in Teshikaga at 10:30 but as the last return is at 14:10 this only gives enough time to get part way around the lake.

## SAFETY NOTES

Although this route is relatively short, the usual caveats about appropriate bad weather gear apply. The caldera rim is exposed to the wind and renowned for misty conditions. The summit itself has a sheer drop off one side and is loose underfoot near the edge. The usual bear precautions should be taken.

## ONSEN NEARBY

There are many onsen in the nearby town of Kawayu 川湯, and along the shores of nearby Lake Kussharo 屈斜路湖. One favourite onsen on the Lake Kussharo lakefront is the (very public) open-air hot-pool at the Kotan township. ■



## PRINTING INSTRUCTIONS

### STEP 1

Load your printer with A4 printer paper (210mm x 297mm). If you've only got Letter size (215.9mm x 279.4 mm), just follow the instructions below. You'll achieve an accurate scale, but the map will be clipped a little at the top and bottom.

### STEP 2

Open the print window by clicking on File > Print (or hitting Ctrl + P on your keyboard).

### STEP 3

Make sure "Actual Size" is selected.

### STEP 4

For double-sided printing, select "Print on both sides of paper".

### STEP 5

For best results, select the highest quality print option available on your printer (settings will vary).

### STEP 6

You won't need this instructions page, so just select the pages that don't include this instruction sheet.

### STEP 7

Click "Print".

## PLEASE PRINT AT 'ACTUAL SIZE' (NO SCALING)

The 1:25,000 scale used in the map is accurate if the PDF is printed without scaling (i.e., ACTUAL SIZE). Follow the instructions on this page to ensure an accurate rendering of the scale.

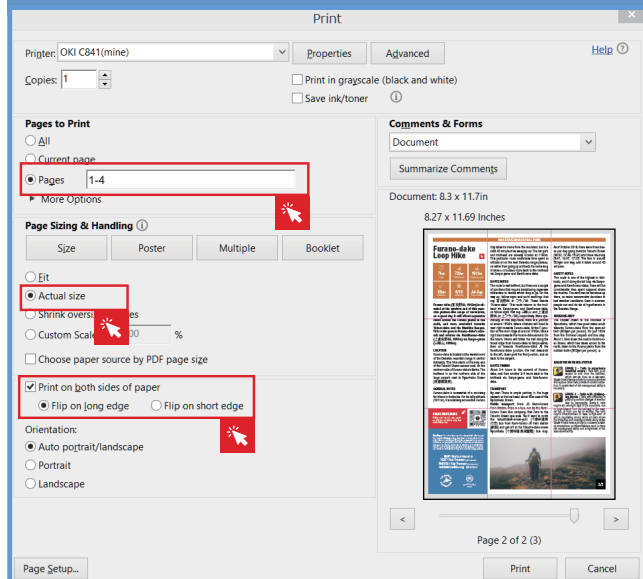


Figure 1. Ensure "Actual Size", and Pages 1-4 are selected (Windows).

## ORIGAMI INSTRUCTIONS

