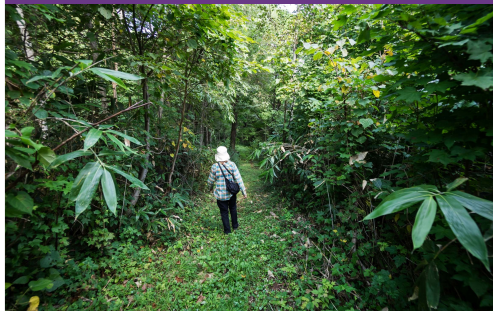




Teshio River Onsen Lookout Walk

天塩川温泉展望の森 Hiking Map 1:25000



0 250 500 750 1,000 m
1cm on the map equals 250m on the ground
Magnetic declination: 10°02' W

Map by hokkaidowilds.org CC BY SA 2020/09/17

Symbol Key (some may not be present)

	Route (time between points)		Contour lines (100m, 10m)
	National Highway		Power transmission lines
	Prefectural Road		Trees/shrubs
	Municipal Road		Rocks/cliffs
	Minor Municipal Road		Onsen (hot spring)
	Walkway		Fumerole
	Bus route (bus stop)		Highway number
	Designated campsite		Water
	Hut		



ONLINE ROUTE GUIDE - Please visit the full route guide for route description, GPS file, and safety notes: <https://hokw.jp/teshion>

THIS IS A GEOREFERENCED PDF - Download the free Avenza Maps® app for iPhone and Android to see your location in real time: <https://hokw.jp/geotesion>

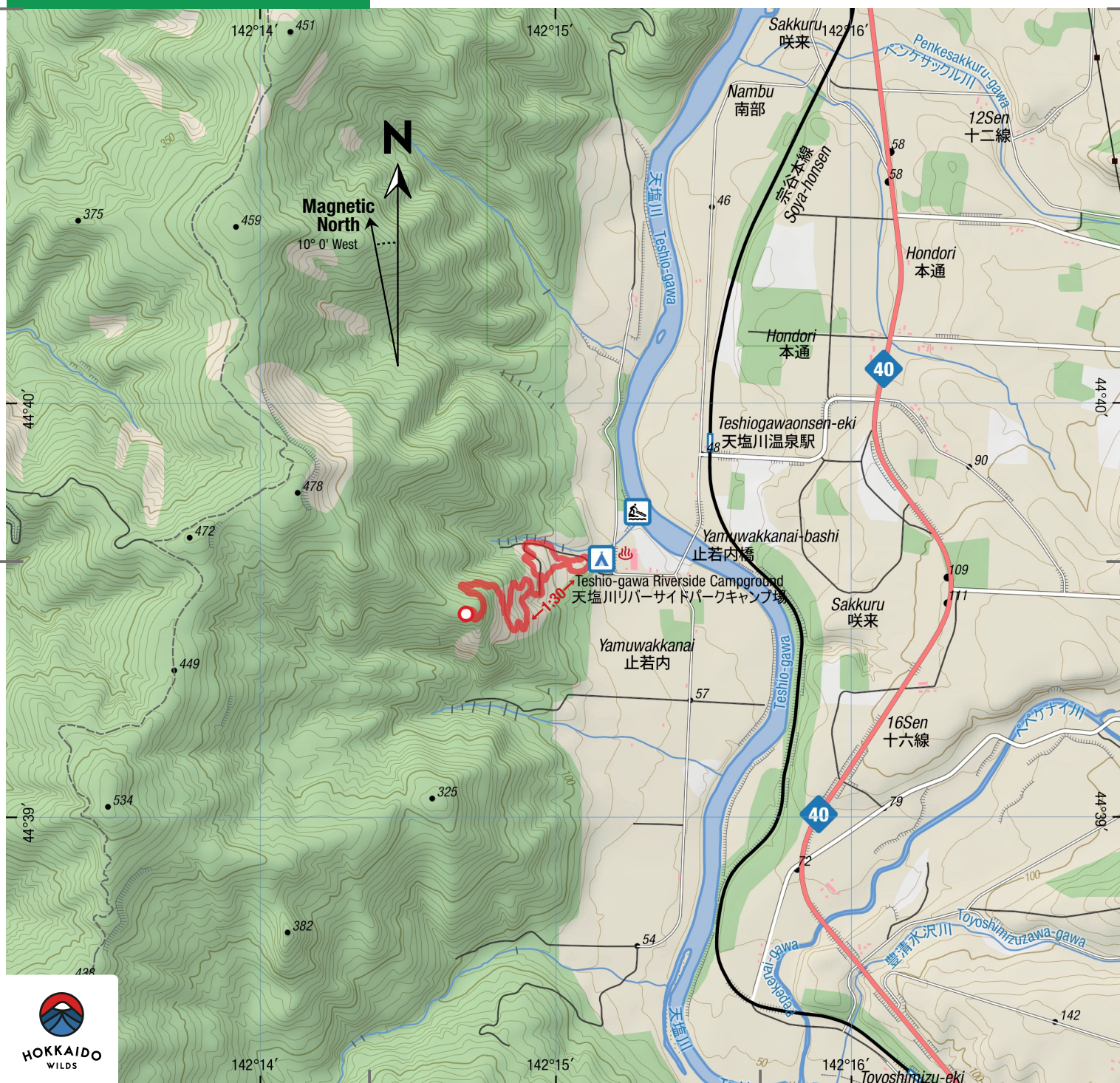


Japanese Map Glossary

Romaji	Kanji	English
bunki cho	分岐町	junction town
dake/mine eki	岳/峯 駅	peak station
goya/koya hinangoya	小屋 避難小屋	hut shelter
ike	池	pond
kawa/gawa	川	river
kako	火口	crater
ko/mizumi	湖	lake
numa	沼	gorge
onsen	温泉	pond
sawa	沢	hot spring
taira/daira	平	stream
tani/dani	谷	plateau
taki	滝	valley
toge	峠	waterfall
yama/san/zan	山	pass
		mountain

この地図の作成に当たっては、国土地理院長の承認を得て、同院発行の基礎地図情報及び電子地形図（タイル）を使用した。（承認番号平30情使、第867号）。また、1/25,000縮尺図GISデータ（環境省生物多様性センターも使用し、hokkaidowilds.orgが作成・加工したものである）。

We created this map using the Geospatial Information Authority of Japan digital basemap (tiles) and basemap data, with the Authority director's permission (no. Hei-30-joshi, dai-867go). We also modified 1:25,000 scale vegetation map data created by the Biodiversity Center of Japan (<http://gis.biodic.go.jp/>).



Teshio-gawa Onsen Hills Walk



 1h 30m Time	 381m Total Climb	 303m Highest point
 3.1km Distance	 4/10 Difficulty	 May-Oct Best season

About 250m from the Teshio-gawa Onsen Canoe Port (天塩川温泉カヌーポート), there's a small network of well-signposted but woefully overgrown walking trails, clearly more popular with the resident wild deer than the resident humans. After bush-bashing your way to the upper end of these trails, there's no view to enjoy. Just a knob surrounded in trees. But on a six-day down-river canoe journey on the Teshio River, this may be just what the doctor ordered after three days of sitting on one's posterior. Better yet, after stretching the legs working up a sweat climbing up the trail, there's a gorgeous open-air onsen (Teshio-gawa Onsen, 天塩川温泉) awaiting just below a free campground at the entrance to the route..

LOCATION

Teshio-gawa Onsen (天塩川温泉) is about 60km north of Shibetsu, one of the



upper starting locations of the great Teshio River canoe journey in northern Hokkaido. This walk starts just above the Teshio Riverside Campground.

GENERAL NOTES

When we did this walk in August 2020, there were brand new route map signs at the entrance of the various trails, which made us blindly expect that the trails would be just as nicely maintained as the signs. They weren't. We spent one-and-a-half blissful hours wandering up trails that appeared to get more deer traffic than human traffic. There was no clearly defined trail of any sort, besides old cuttings for the track. We did our bit to clear the trail by stamping down the fuki-no-to rhubarb-like growths on the trail. At a few points we had to clamber over small downed saplings.

As such, this is hardly going to be a destination in it's own right. But for those who are keen for a quick stretch-of-the-legs, this network of trails suffice. At points along the way there are also glimpses of the Teshio River

ROUTE NOTES

We took about 1 hour on the climb up, and about 30 minutes on the walk back down to the campground.

Start at the lower trailhead, just above the campground. There's a sign with trails marked. We recommend taking a photo of this sign. The higher you climb, the fewer signs there are. There's no one single trail – this area is more of a network of interconnected trails. The route we eventually took followed a northern side of the central loop to the 'summit', and the southern side of the loop on the way back down, if that makes any sense at all. There's no summit per se. Just an upper knob with no view. Gloriously pointless hiking at its finest. Regardless of where you end up walking, it'd be pretty difficult to get properly lost.

TRANSPORT

By car: There is plenty of parking in the campsite parking lot. If for some reason that parking lot is full, there's even more parking just down the road at the onsen parking area.

Public transport: The sleepy little Teshio-gawa Onsen JR station (天塩川温泉駅, location) on the Soya Line is about 1km from the Teshio-gawa Onsen. See Google Maps for up to date train timetables. The Teshio-gawa Onsen canoe port (天塩川温泉カヌーポート) is about a 250m walk to the campground.

ONSEN NEARBY

The Teshio-gawa Onsen (天塩川温泉, 400yen) is just below the start of the walking route. Just below the campground, the onsen has some great views of the river and surrounding landscape from the outdoor pools. There's also an attached restaurant and hotel accommodation too. ■



ONLINE ROUTE GUIDE

Please visit the full route guide for GPS file, interactive map, and extra safety notes: <https://hokw.jp/teshion>



Disclaimer The information on this map was derived from digital databases provided by the Geospatial Information Authority of Japan and the Biodiversity Center of Japan. Care was taken in the creation of this map. HokkaidoWilds.org cannot accept any responsibility for errors, omissions, or positional accuracy. There are no warranties, expressed or implied, including the warranty of merchantability or fitness for a particular purpose, accompanying this product. However, notification of any errors will be appreciated.

TEXT, PHOTOS, MAP | Rob Thomson

hokkaidowilds.org 2020/09/18

MAP FOLD & LAYOUT CONCEPT | Wellidonegan

Unless indicated otherwise, all content on this PDF is licensed under a Creative Commons Attribution-ShareAlike 4.0 International License (CC BY-SA 4.0). Please attribute <author-name> (hokkaidowilds.org), and let us know so we can link to your work. E.g., "Photo by Rick Siddle (hokkaidowilds.org)"



PRINTING INSTRUCTIONS

STEP 1

Load your printer with A4 printer paper (210mm x 297mm). If you've only got Letter size (215.9mm x 279.4 mm), just follow the instructions below. You'll achieve an accurate scale, but the map will be clipped a little at the top and bottom.

STEP 2

Open the print window by clicking on File > Print (or hitting Ctrl + P on your keyboard).

STEP 3

Make sure "Actual Size" is selected.

STEP 4

For double-sided printing, select "Print on both sides of paper".

STEP 5

For best results, select the highest quality print option available on your printer (settings will vary).

STEP 6

You won't need this instructions page, so just select the pages that don't include this instruction sheet.

STEP 7

Click "Print".

PLEASE PRINT AT 'ACTUAL SIZE' (NO SCALING)

The 1:25,000 scale used in the map is accurate if the PDF is printed without scaling (i.e., ACTUAL SIZE). Follow the instructions on this page to ensure an accurate rendering of the scale.



Figure 1. Ensure "Actual Size", and Pages 1-4 are selected (Windows).

ORIGAMI INSTRUCTIONS

