



Fushimi-dake

伏美岳Hiking Map1:25000





8 hrs
Time



1370m
Total Climb



1792m
Highest point



20km
Distance



7/10
Difficulty



Jun-Oct
Best season

Fushimi-dake 伏美岳 (1792m) lies at the end of an eastern spur of the central Hidaka Range, overlooking the broad agricultural basin of the Tokachi Plain. Formerly easy to access, the 2016 typhoons destroyed the approach road and it now requires a longer walk in to the trailhead and its nearby spartan but comfortable hut. The steep climb is rewarded on a fine day by views onwards along the ridge to the



highest point of the wild Hidaka mountains at Poroshiri-dake 幌尻岳 (2053m).

LOCATION
Fushimi-dake lies on an eastern spur of the central Hidaka Range and is accessed from Memuro Town 芽室町 in the Tokachi Region 十勝地方 southwest of Obihiro City 帯広市. The hiking trail officially starts at the Fushimi-goya Hut, but as of 2020 the 6.5km of forestry road to the hut is still closed to vehicular traffic due

to multiple washouts, so hikers have to start from the Tomuraushi-rindo forestry road gate.

GENERAL NOTES
Another victim of the typhoons of recent years, the forest road to the hut and former trailhead is closed off and the return trip to the summit is now over 20km and involves a height gain of 1400m, with some rough washed out sections and stream crossings to negotiate. Staying overnight at the isolated and basic Fushimi-koya 伏美小屋 hut would allow more time and be a good option for a Hokkaido backcountry experience.

There are no facilities at the start of the hike, the nearest shops are back in the small farming settlement of Memuro or up along Route 38 near Obihiro around 30km away. There is a toilet and fresh water supply by the hut but be sure to boil or filter all water obtained here.

ROUTE TIMING AND NOTES
Allow a full 8 hours (4.5h up, 3.5h down) for the return trip. It's about 1.5h from the forestry road gate to the hut.

The route is signed and clear underfoot though overgrown in a few places as it sees less traffic these days. From the gate across the forest road (383m elevation) it's a 7km hike up the track with some rough washouts to negotiate before you reach the small Fushimi-koya hut (695m) in about an hour and a half. The former trailhead (729m) is about 5 mins further on.

HIDAKA RANGE

From here the proper climbing trail begins, briefly beside a small stream then steeply up the hillside for an elevation gain of over 1000m through mature forest and sasa dwarf bamboo. The occasional sign marks some of the way stages 合目. At the ninth stage 9合目 the forest thins out to haimatsu dwarf pines up to the open summit (1792m though the sign says 1791). Allow around three hours from the former trailhead. Return the same way.

TRANSPORT
By car: Take the local Route 55 that loops through the farming settlements of Memuro Town 芽室町. From the most westerly section of the road where it turns back from the mountains at a 90 degree angle, locate a minor road that runs up alongside the Biseigawa 美生川 river for about 8km up to the Bisei Dam 美生ダム. Before the dam a forest road, the Tomuraushi rindo トムラウシ林道 runs off to the left but is closed by a gate with a sign for the Fushimi-dake trailhead 伏美岳登山口 and space for a few cars to park.
Public transport: There is no public transport access.

SAFETY NOTES
This is a long and remote route to a high exposed summit with real risks of hypothermia in bad weather. Carry appropriate gear and enough food and water. Take the usual precautions against bears and also watch out for ticks in early and mid-summer. If the river is high after heavy rain the washouts in the forest road may be dangerous to negotiate and the stream impossible to cross safely. Also note that officially the washed out forestry road is off limits to vehicular traffic, so hikers walk the







FUSHIMI EMERGENCY HUT



Details: A basic but solidly built steel beam A-frame cabin near the Fushimi-dake summer hiking trail head. Has a good wood stove with wood supplied. About 7km along the now destroyed forestry road from the main road.
Capacity: 15 persons.
Cost: Free.
Contact: Memuro Town Council Tourism Department (芽室町観光係, TEL: 0155-62-2611.
Booking details: Cannot book in advance (no booking required).

remnants of the road at their own risk.

ONSEN NEARBY
There are no nearby onsen, the nearest spa facilities being back in Memuro itself. The closest is the pokey but soothing baths at the Shin-Arashiyama Sanso Lodge めむろ新嵐山山荘 (270yen). There's an attached restaurant, and a new campground on the premises. ■

Japanese Map Glossary		
Romaji	Kanji	English
bunki	分岐	junction
cho	町	town
dake/mine	岳/峯	peak
eki	駅	station
goya/koya	小屋	hut
hinangoya	避難小屋	shelter
ike	池	pond
kawa/gawa	川	river
kako	火口	crater
ko/mizumi	湖	lake
kyo	峡	gorge
numa	沼	pond
onsen	温泉	hot spring
sawa	沢	stream
taira/daira	平	plateau
tani/dani	谷	valley
taki	滝	waterfall
toge	峠	pass
yama/san/zan	山	mountain

ONLINE ROUTE GUIDE

Please visit the full route guides for GPS files, interactive maps, and extra safety notes: <https://hokw.jp/fushih>



Disclaimer The information on this map was derived from digital databases provided by the Geospatial Information Authority of Japan and the Biodiversity Center of Japan. Care was taken in the creation of this map. HokkaidoWilds.org cannot accept any responsibility for errors, omissions, or positional accuracy. There are no warranties, expressed or implied, including the warranty of merchantability or fitness for a particular purpose, accompanying this product. However, notification of any errors will be appreciated.

TEXT, PHOTOS | Rick Siddle, Rob Thomson

MAP | Rob Thomson

hokkaidowilds.org 2021/01/13

MAP FOLD & LAYOUT CONCEPT | Dominika Gan

Unless indicated otherwise, all content on this PDF is licensed under a Creative Commons Attribution-ShareAlike 4.0 International License (CC BY-SA 4.0). Please attribute <author-name> (hokkaidowilds.org), and let us know so we can link to your work. E.g., "Photo by Rick Siddle (hokkaidowilds.org)"



Fushimi-dake

伏見岳 Hiking Map 1:25000

0 250 500 750 1,000 m

1cm on the map equals 250m on the ground
Magnetic declination: 9°23' W | Map by hokkaidowilds.org CC BY SA 2021/01/13

Symbol Key (some may not be present)

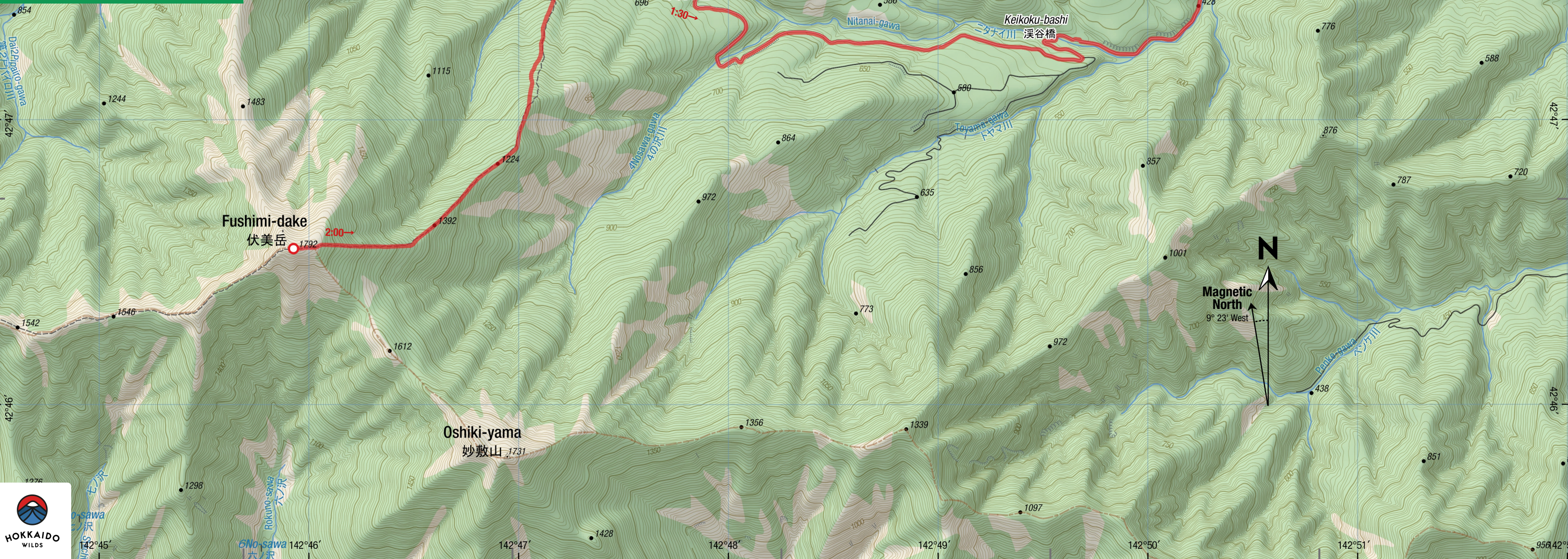
- | | | | |
|--|-----------------------------|--|---------------------------|
| | Route (time between points) | | Contour lines (100m, 10m) |
| | National Highway | | Power transmission lines |
| | Prefectural Road | | Trees/no trees |
| | Municipal Road | | Rocks/cliffs |
| | Minor Municipal Road | | Onsen (hot spring) |
| | Walkway | | Fumerole |
| | Bus route (bus stop) | | Highway number |
| | Designated campsite | | Hut |

ONLINE ROUTE GUIDES - Please visit the full route guides for route description, GPS files, and safety notes: <https://hokw.jp/fushih>

THIS IS A GEOREFERENCED PDF - Download the free Avenza Maps® app for iPhone and Android to see your location in real time: <https://hokw.jp/geofushh>

Disclaimer The information on this map was derived from digital databases provided by the Geospatial Information Authority of Japan and the Biodiversity Center of Japan. Geira was taken in the creation of this map. HokkaidoWilds.org cannot accept any responsibility for errors, omissions, or positional accuracy. There are no warranties, expressed or implied, including the warranty of merchantability or fitness for a particular purpose, accompanying this product. However, notification of any errors will be appreciated.

この地図の作成に当たっては、国土地理院長の承認を得て、国土地理院の基礎地図情報及び電子地図情報（タイル）を使用した。承認番号第30号。また、1/25,000縮尺のGISデータ（環境省生物多様性センター）も使用した。HokkaidoWilds.orgが作成・加工したものである。
We created this map using the Geospatial Information Authority of Japan digital basemap (tiles) and basemap data, with the Authority director's permission (no. 30-2021-001-001). We also modified 1:25000 scale vegetation map data created by the Biodiversity Center of Japan (<http://biodiv.biodic.jp/>).



PRINTING INSTRUCTIONS

STEP 1

Load your printer with A3 printer paper (297mm x 420mm). If you've only got Tabloid or Ledger size (279mm x 432 mm), just follow the instructions below. You'll achieve an accurate scale, but the map will be clipped a little at the top and bottom.

STEP 2

Open the print window by clicking on File > Print (or hitting Ctrl + P on your keyboard).

STEP 3

Make sure "Actual Size" is selected.

STEP 4

For double-sided printing, select "Print on both sides of paper".

STEP 5

For best results, select the highest quality print option available on your printer (settings will vary).

STEP 6

You won't need this instructions page, so just select the pages that don't include this instruction sheet.

STEP 7

Click "Print".

PLEASE PRINT AT 'ACTUAL SIZE' (NO SCALING)

The 1:25,000 scale used in the map is accurate if the PDF is printed without scaling (i.e., ACTUAL SIZE). Follow the instructions on this page to ensure an accurate rendering of the scale.



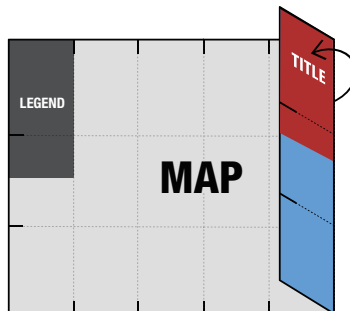
Figure 1. Ensure "Actual Size" is selected (Windows).

ORIGAMI INSTRUCTIONS

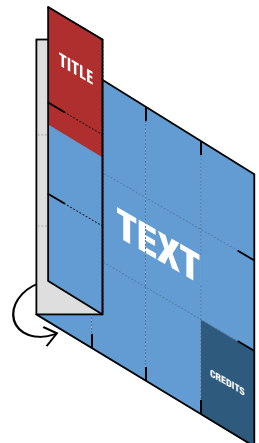
1



2



3



4



5



6



7

