



Yotei-zan Kimobetsu Route

羊蹄山 Ski Tour Map 1:25000



0 250 500 750 1,000 m

1cm on the map equals 250m on the ground
Magnetic declination: 9° 38' W

Map by hokkaidowilds.org CC BY SA 2021/01/13

Symbol Key (some may not be present)

	Route (time between points)		Contour lines (100m, 10m)
	National Highway		Power transmission lines
	Prefectural Road		Trees/shrubs
	Municipal Road		Rocks/cliffs
	Minor Municipal Road		Onsen (hot spring)
	Walkway		Fumerole
	Bus route (bus stop)		Highway number
	Designated campsite		Hut



ONLINE ROUTE GUIDE - Please visit the full route guide for route description, GPS file, and safety notes: <https://hokw.jp/yotkim>

THIS IS A GEOREFERENCED PDF - Download the free Avenza Maps® app for iPhone and Android to see your location in real time: <https://hokw.jp/geoykm>

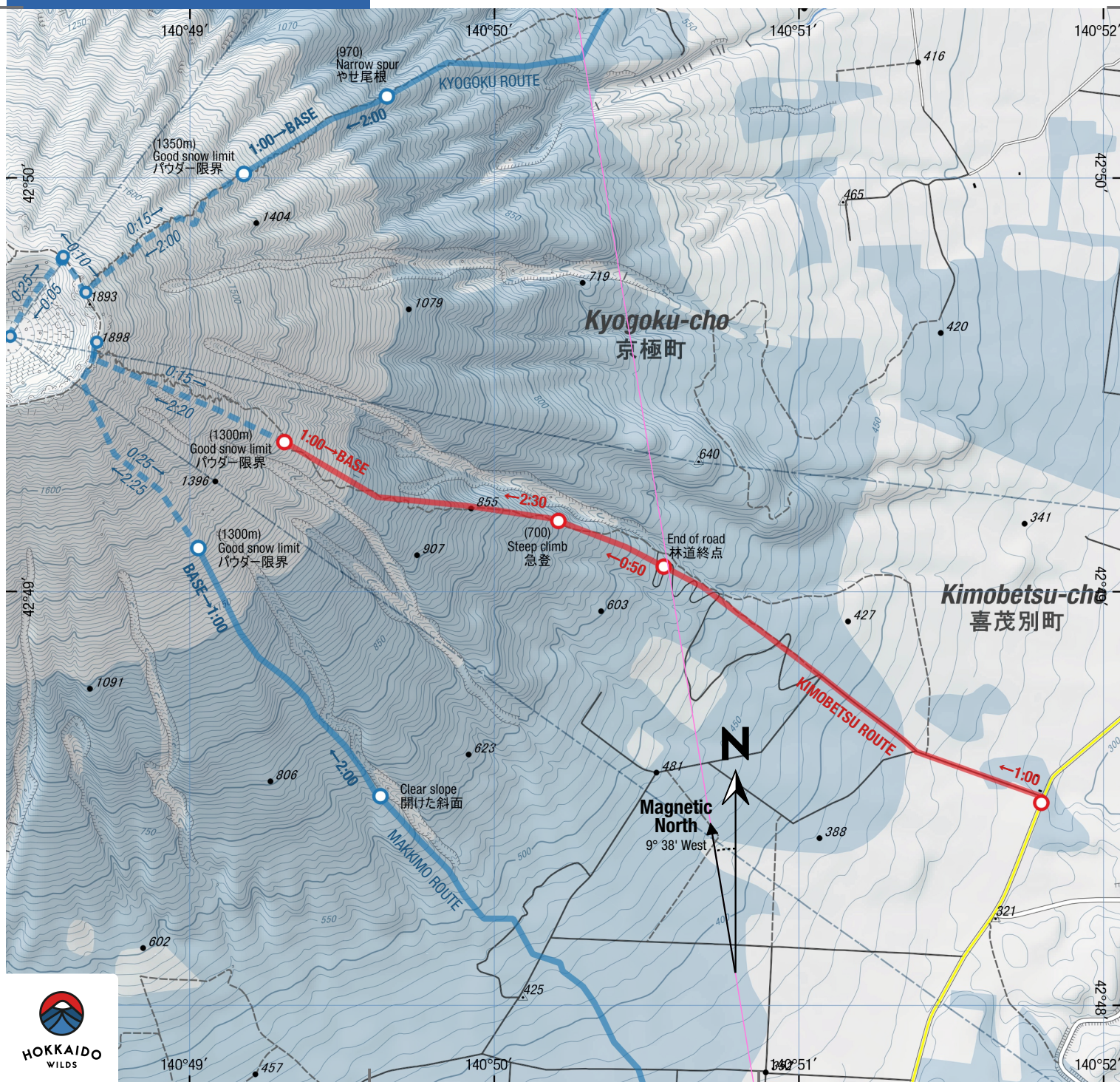


Japanese Map Glossary

Romaji	Kanji	English
bunki	分岐	junction
cho	町	town
dake/mine	岳/峯	peak
eki	駅	station
goya/koya	小屋	hut
hinangoya	避難小屋	shelter
ike	池	pond
kawa/gawa	川	river
kako	火口	crater
ko/mizumi	湖	lake
kyo	峡	gorge
numa	沼	pond
onsen	温泉	hot spring
sawa	沢	stream
taira/daira	平	plateau
tani/dani	谷	valley
taki	滝	waterfall
toge	峠	pass
yama/san/zan	山	mountain

この地図の作成に当たっては、国土地理院長の承認を得て、同院発行の基盤地図情報及び電子地形図（タイル）を使用した。（承認番号平30情使、第867号）。また、1/25,000植生図GISデータ（環境省生物多様性センターも使用し、hokkaidowilds.orgが作成・加工したものである）。

We created this map using the Geospatial Information Authority of Japan digital basemap (tiles) and basemap data, with the Authority director's permission (no. Hei-30-joshi, dai-867go). We also modified 1:25,000 scale vegetation map data created by the Biodiversity Center of Japan (<http://gis.biodic.go.jp/>).



Yotei-zan Kimobetsu Route



 5.5hrs Time	 1000m Total Climb	 1300m Highest point
 10km Distance	 6/10 Difficulty	 Dec-May Best season

The Yotei-zan (羊蹄山, 1898m) Kimobetsu Route (喜茂別コース) is one of this volcano's more popular routes, for good reason - from around 1400m down to 800m is an uncannily plane-like slope that seems to stretch out in all directions. If it wasn't covered in waist-deep fluffy powder, you'd be forgiven to think you're standing on a groomed slope. For the more adventurous, there are also a few gullies to the left and right of the route that will allow for some relatively sheltered couloir-like downhill skiing options in stable snow conditions. Like all routes on Yotei-zan, the most consistent skiing on this route is to be had from below 1300m.

LOCATION

Yotei-zan is a large free-standing volcano near the Niseko ski resort area in southern Hokkaido. This ski touring route up Yotei-

zan heads up from the Kimobetsu Route Hiking Trail (喜茂別コース), on the eastern side of the mountain, in Kimobetsu Town.

GENERAL NOTES

It was an unusually low snow-fall December when we first did this route (29th December, 2019), and this contributed greatly to our choice of doing this particular route on this particular day: the lower 1km or so was on a forestry road (hence avoiding too much sasa bamboo grass bashing), there are no creek crossings required, and it's one of the more open routes in terms of tree density. It turned out to be a good choice - despite some vegetation still exposed, the skiing was exemplary.

ROUTE TIMING AND NOTES

Skiers should allow about 4 hours from the carpark to the 1300m point, beyond which the snow conditions often turn to ice and rime. For most skiers, we recommend dropping from around 1300m, for a one-hour descent back to the trailhead.

While this route more or less follows the summer Kimobetsu Route hiking trail, any trail markers will be buried in winter, so climbers will be navigating on their own. At the trailhead at the moain road, there's a Kimobetsu Route hiking trail sign on the roadside, just south of an abandoned house, but it's often buried in deep snow in winter. From the trailhead, head up the forestry road - in about 500m there's a gate. Keep heading straight up the forestry road, and cut straight up while the road zigzags its way up the hillside - skiers will cross the road multiple times.

At around 550m in altitude the forestry road ends, and the climb starts in earnest. From around this point, if the weather is clear, the upper 1300m point where most skiers start their descent will be in view. Even from this point, the slopes are dotted with relatively well-spaced birch trees. While other popular routes on Yotei-zan have lower sections with relatively tight trees, this Kimobetsu Route is unique in having good skiing slopes even quite low down. The route runs to the left of a deep, large gully - keep well away from the edge. At around 700m there's a short but sharp steep section - a number of short zig-zags should make short work of it.

From around 800m to 1000m in altitude, the trees thin out even more, and the slopes broaden out just as the slope angle also starts to get steeper. Looking up towards the 1400m

mark, there's an imposing looking ridge that grows in height up the mountain. This is usually beyond the realm of good skiing though, so most skiers will just head to around the 1300m mark and enjoy the descent from there. On the descent, keep an eye on the uptracks, and until the 800m mark keep towards the right, away from the large, deep gully. From 800m and lower, keep towards the left - it's easy to get pulled to the right, where the summer trail will lead skiers too far to the south.

TRANSPORT

By car: The only parking for this route is on the roadside, up on the buried sidewalk. The sidewalk is cleared regularly, but after large snowfall, visitors may need to clear the sidewalk themselves to make a parking space. Allow at least 10 minutes of vigorous shoveling with avalanche shovels for this. Make sure to park as close to the snowbanks as possible, so as to not obstruct traffic.

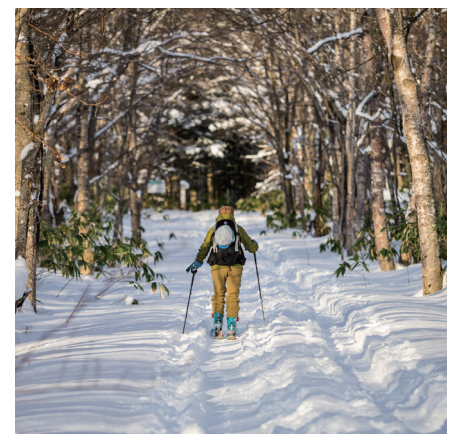
Public transport: There are no public transport options for this route.

SAFETY NOTES

This free-standing volcano is exposed to the weather from all sides and it has the potential to get pretty wild pretty quickly; your escape is a rapid descent and so pay attention to potential routes as you climb. Like all routes on Yotei-zan, if you're shooting for the summit this may be one of the few times you'll use your ski crampons and boot crampons in Hokkaido.

ONSEN NEARBY

The closest onsen to the trailhead is the Kyogoku Onsen (京極温泉 京極ふれあい交流センター, 600yen). They're open from 10am till 9pm (closed the second Monday of each month). The attached restaurant is open 11:30am till 7pm. ■



ONLINE ROUTE GUIDE

Please visit the full route guide for GPS file, interactive map, and extra safety notes: <http://hokw.jp/yotkim>



Disclaimer The information on this map was derived from digital databases provided by the Geospatial Information Authority of Japan and the Biodiversity Center of Japan. Care was taken in the creation of this map. HokkaidoWilds.org cannot accept any responsibility for errors, omissions, or positional accuracy. There are no warranties, expressed or implied, including the warranty of merchantability or fitness for a particular purpose, accompanying this product. However, notification of any errors will be appreciated.

TEXT, PHOTOS, MAP | Rob Thomson

hokkaidowilds.org 2020/01/08

MAP FOLD & LAYOUT CONCEPT | Dominika Gan

Unless indicated otherwise, all content on this PDF (pages 1 to 1) is licensed under a Creative Commons Attribution-ShareAlike 4.0 International License (CC BY-SA 4.0). Please attribute <author-name> (hokkaidowilds.org), and let us know so we can link to your work. E.g., "Photo by Rick Siddle (hokkaidowilds.org)"



PRINTING INSTRUCTIONS

STEP 1

Load your printer with A4 printer paper (210mm x 297mm). If you've only got Letter size (215.9mm x 279.4 mm), just follow the instructions below. You'll achieve an accurate scale, but the map will be clipped a little at the top and bottom.

STEP 2

Open the print window by clicking on File > Print (or hitting Ctrl + P on your keyboard).

STEP 3

Make sure "Actual Size" is selected.

STEP 4

For double-sided printing, select "Print on both sides of paper".

STEP 5

For best results, select the highest quality print option available on your printer (settings will vary).

STEP 6

You won't need this instructions page, so just select the pages that don't include this instruction sheet.

STEP 7

Click "Print".

PLEASE PRINT AT 'ACTUAL SIZE' (NO SCALING)

The 1:25,000 scale used in the map is accurate if the PDF is printed without scaling (i.e., ACTUAL SIZE). Follow the instructions on this page to ensure an accurate rendering of the scale.

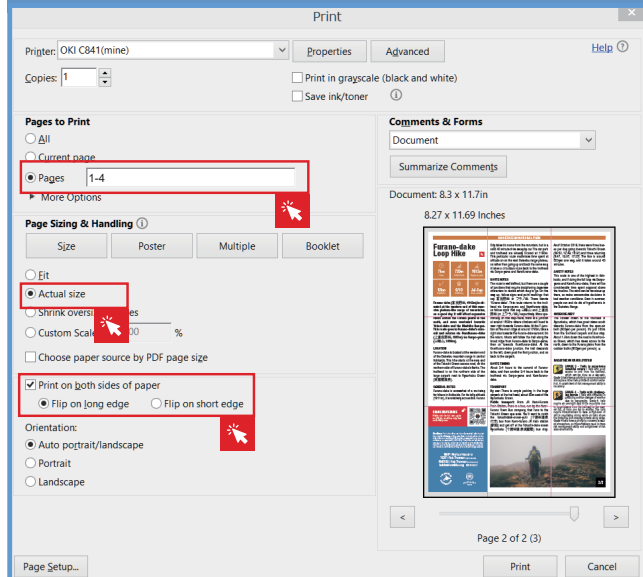


Figure 1. Ensure "Actual Size", and Pages 1-4 are selected (Windows).

ORIGAMI INSTRUCTIONS

