



Maefurano-dake

Daisetsu-zan National Park

前富良野岳 Ski Touring Map 1:25000



8.5hrs Time	1190m Total Climb	1625m Highest point
21km Distance	7/10 Difficulty	Jan-May Best season

Maefurano-dake (前富良野岳, 1625m) stands as advance-guard to the mighty Furano-dake (富良野岳, 1921m) in central Hokkaido. Sitting at the south-western-most point of the Daisetsu-zan National Park, Maefurano-dake's southern slopes offer some spectacular skiing from the summit. On a clear day, skiers will be treated to a rare glimpse of Furano-dake from the south, as well as dramatic views across the primeval forests and marshes of the Genshi-ga-hara plateau.

LOCATION
Maefurano-dake sits at the southwestern



terminus of the Daisetsuzan mountain range in central Hokkaido. This ski touring route up Maefurano-dake goes via the Ningle Forest Management Hut, which is accessed about 6.5km west of the hut via a snowed in road.

GENERAL NOTES
We'll go out on a limb here and claim that Maefurano-dake has some of the best and sustained south-facing skiing in the entire Daisetsuzan mountain range. It's also some of the less accessible skiing, with a return daytrip in mid-winter requiring at least 8 hours return for a strong party. In April, it's possible to drive to the Akigumo-bashi Bridge (秋雲橋) on the Daisetsuzan National Park border, so that would cut out around 2 hours return of mostly flat-land skinning. The Ningle Forest Management Hut, however, can make a great base for an overnight mission. Maefurano-dake has three prominent south-facing ridges, all of which are feasible ascent routes. The ridges themselves may be hard-packed snow and/or ice, so carrying ski crampons is recommended. We opted to ascend on the eastern-most north-south ridge, as the initial ascent is more gentle. Regardless of route, however, depending on snow conditions the final 20 meters or so to the summit ridge may require some icy traversing.

ROUTE TIMING AND NOTES
This route is not marked. Expect just over 5 hours from road-end to summit, and then about 2.5hrs back. Our route timings here assume you're carrying (or pulling) overnight gear to the hut. If doing this as a daytrip, one might be able to shave off an hour or so. Either way, if attempting this route as a daytrip before mid-April, we'd strongly suggest starting well before daybreak (sunset is around 4:30pm in mid-winter).

Park up as far to the side of the road as possible



near the road-closed sign in Higashitomioka (東富岡). On your skis or snowshoes, carry on up the road and turn right at the t-intersection. After about 1km on a very gentle descent, turn left onto the main access road to the Genshi-ga-hara trailhead (and Ningle Forest Management Hut). Follow this road for about 5km, and you'll arrive at the hut, passing a national park sign along the way.

From the hut, to get to the eastern-most north-south ridge (the one we followed to the summit), carry on along the upper Genshi-ga-hara hiking trail for just under 2km. Just past a prominent gully, gain the ridge to the left. It'll be a steep zig-zag to start with, before emerging onto a gently sloping plateau with frequent clearings. Follow the left (western) edge of this plateau as you climb. Gradually, this eastern-most north-south ridge will become more apparent. To the climber's left, another viable north-south ridge will be visible. Depending on the snow conditions, either trudge up the icy ridge line, or zig-zag up the open face to the climber's right of the ridge proper.

Eventually, you'll be funneled up to a false summit at around 1540m. From here, the final approach to the summit ridge – and indeed the summit – will likely appear dauntingly steep and impassible. Proceed along the gently sloping ridgeline, and most skiers will find it practical to veer right from the ridge (to the north, away from the actual summit) to make a short, airy traverse and gain the main summit ridge. Once on the summit ridge, it is a short 400m gentle-then-steep skin to the summit. The final 250m climb to the summit proper is moderately steep, and may be icy/rimed. Be prepared to bootpack and/or use crampons.

We returned from the summit back to the

false summit the way we had come. Near the false summit at around 1560m, we did a snow compression test on the face of the gloriously tempting south-facing bowl below the summit and found some marginally weak layers about 20cm down. We'd had at least three days of strong easterly winds with snow the previous



few days, so opted to play it safe and ski the southeast face we'd skinned up instead. Any avalanche on the south-facing bowl would be funneled deep into a rapidly tightening gully.

At the treeline at around 1360m, we veered off the southeast face into the main, wide southern gully, now well anchored with old-growth trees. We alternated between skiing the fall-line, traversing, and skiing the fall-line, eventually skiing all the way to the floor of the gully, and

CENTRAL HOKKAIDO

back to the summer trail. From the summer trail, it's just possible to get back to the hut without skins. From the hut to the reservoir near the national park border, the road is steep enough to ski without skins. From the reservoir skins may be required, depending on the snow quality – with warmer temperatures we were able to get all the way back to the car without putting skins on.

TRANSPORT
By car: There is roadside parking at the road-closed gate around here. Park well to the side of the road, and don't park too close to the gate, as snow-clearing equipment uses this area to turn around. You may need to spend 15 minutes or so clearing your own parking space off the side of the road.
Public transport: There are no public transport options for this route.

SAFETY NOTES
This route requires alpine travel well above the treeline. On the descent, there are multiple opportunities to ski big lines on big, south-facing open slopes – do the appropriate tests to ascertain snow stability before attempting to ski these lines. Despite the peak's low altitude, temperatures can drop to below -20°C. Prepare accordingly. This is a remote peak, with very limited overland access. Skiers must be experienced, well prepared, and very self-sufficient. There's very limited mobile reception deep in the approach valley, so some sort of emergency GPS messenger is highly recommended.

Furano area avalanche conditions: Search for "Furano Avalanche Center" on Facebook for sporadic observations.

ONSEN NEARBY
From the winter trailhead, the closest onsen is Furano La Terre (ふらのラテール, 980yen). It's

Japanese Map Glossary

Romaji	Kanji	English
bunki	分岐	junction
cho	町	town
dake/mine	岳/峯	peak
eki	駅	station
goya/koya	小屋	hut
hinangoya	避難小屋	shelter
ike	池	pond
kawa/gawa	川	river
kako	火口	crater
ko/mizumi	湖	lake
kyo	峡	gorge
numa	沼	pond
onsen	温泉	hot spring
sawa	沢	stream
taira/daira	平	plateau
tani/dani	谷	valley
taki	滝	waterfall
toge	峠	pass
yama/san/zan	山	mountain



NINGLE FOREST MANAGEMENT HUT

Details: Available to general public upon application - call Furano City Council to arrange key pickup. Good wood-burning stove (wood supplied), interior toilets, well maintained and upkept.
Capacity: 30 persons.
Cost: Free.
Contact: Furano City Council, TEL: 0167-39-2312.

about 14km (20mins) from the trailhead. There's indoor baths, a cave bath, outdoor baths – it's a huge facility. It also has an attached restaurant. If you're headed further into central Hokkaido, then it would be worth making the extra 20 minutes drive up the mountain to the Tokachi Onsen area. Ryounkaku (凌雲閣, 800yen) at the end of the road arguably has one of the most epic outdoor onsen views in Hokkaido. Of course there's good old Hakuginso (白銀荘, 700yen for a soak). And for the adventurous, there's the Fukiage Onsen free wild onsen just down the road from Hakuginso (吹上温泉, free). ■

ONLINE ROUTE GUIDE
Please visit the full route guides for GPS files, interactive maps, and extra safety notes: <http://hokw.jp/maefur>

Disclaimer The information on this map was derived from digital databases provided by the Geospatial Information Authority of Japan and the Biodiversity Center of Japan. Care was taken in the creation of this map. HokkaidoWilds.org cannot accept any responsibility for errors, omissions, or positional accuracy. There are no warranties, expressed or implied, including the warranty of merchantability or fitness for a particular purpose, accompanying this product. However, notification of any errors will be appreciated.

MAP, TEXT, PHOTOS | Rob Thomson
hokkaidowilds.org 2020/03/13
MAP FOLD & LAYOUT CONCEPT | Dominika Gan

Unless indicated otherwise, all content on this PDF (pages 1 to 1) is licensed under a Creative Commons Attribution-ShareAlike 4.0 International License (CC BY-SA 4.0). Please attribute <author-name> (hokkaidowilds.org), and let us know so we can link to your work. E.g., "Photo by Rick Siddle (hokkaidowilds.org)"

Maefurano-dake plus Ningle Hut

前富良野岳 Ski Tour Map 1:25000



Map declination from GRID NORTH: 9°43' W (-3' per year) | MGRS Zone: 54TXP
Grid spacing: 1000m | Map by hokkaidowilds.org CC BY SA 2023/12/07

Symbol Key

- | | |
|-------------------------------------|----------------------------------|
| 3:00 Ascent/Ski-tour Route (time) * | Contour lines (100m, 10m) |
| Freeride Route * | Cliffs / Bluff / Rocks |
| Advanced Route * | Trees / No trees |
| National Highway | Buildings |
| Prefectural Highway / Gate | Backcountry gates |
| Municipal Road | Ploughed parking / Osen facility |
| Minor Municipal Road | Shop / Public toilet |
| Forestry Road | Hut / Campground |
| Bus route / Stop | Shrine / Temple |
| Ski lift / Abandoned ski lift | Hot spring / Fumerole |
| Municipal boundary | Transmission tower |
| Power lines | |

ONLINE ROUTE GUIDE - Please visit the full route guide for route description, GPS files, and safety notes: <https://hokw.jp/maefur>

THIS IS A GEOREFERENCED PDF - Download the free Avenza Maps® app for iPhone and Android to see your location in real time: <https://hokw.jp/geomfr>

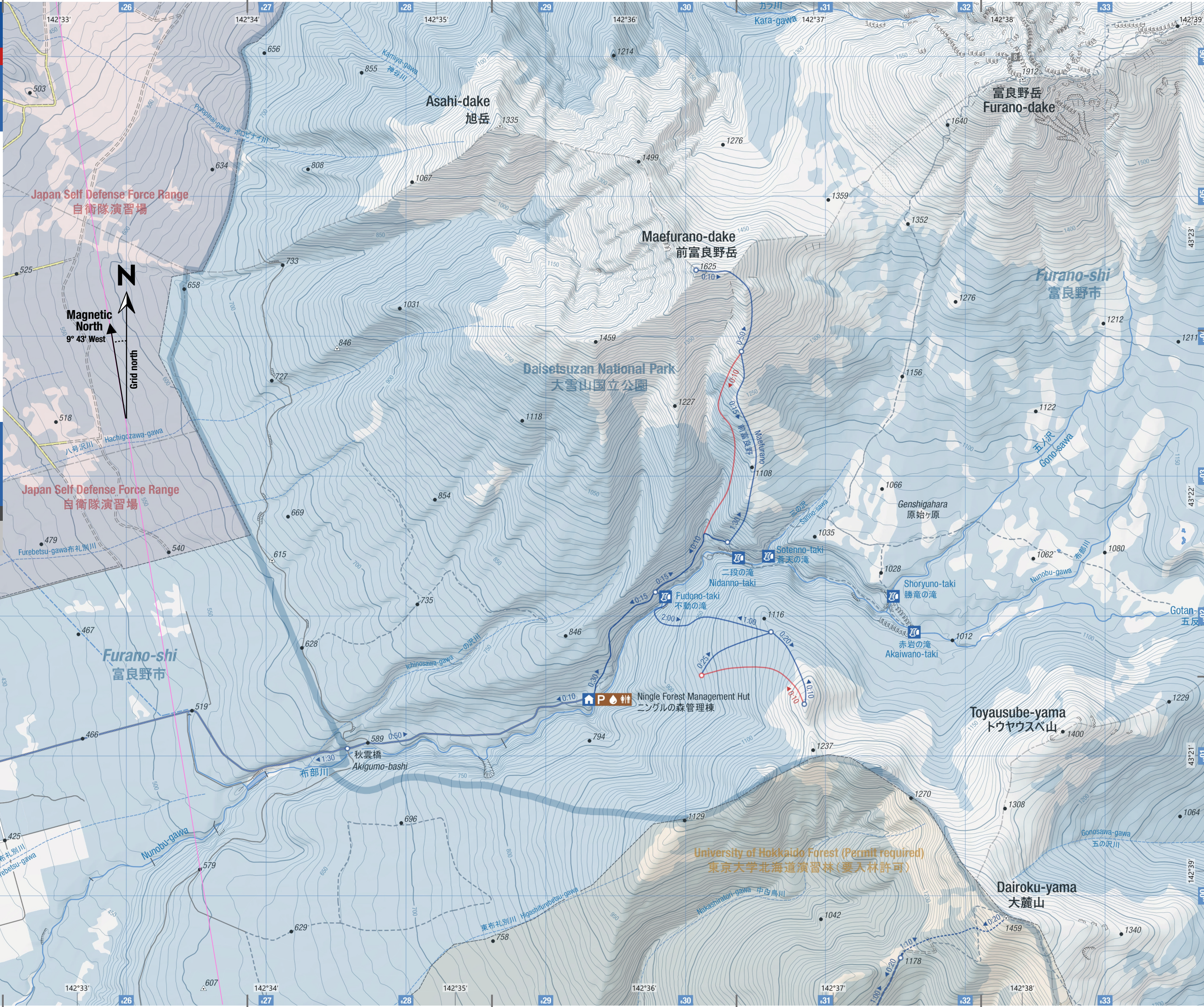
Disclaimer The information on this map was derived from digital databases provided by the Geospatial Information Authority of Japan and the Biodiversity Center of Japan. Care was taken in the creation of this map. HokkaidoWilds.org cannot accept any responsibility for errors, omissions, or positional accuracy. There are no warranties, expressed or implied, including the warranty of merchantability or fitness for a particular purpose, accompanying this product. However, notification of any errors will be appreciated.

この地図の作成に当たっては、国土地理院の地図データ及び電子地図データ（タイル）を使用した。また、国土地理院の地図データ（タイル）を使用した。また、国土地理院の地図データ（タイル）を使用した。また、国土地理院の地図データ（タイル）を使用した。

We created this map using the Geospatial Information Authority of Japan digital basemap (tiles) and basemap data, with the Authority's director's permission (no. 18b-20-p02b, 22a-20-p01b). We also modified 1:25,000 scale vectorial map data created by the Biodiversity Center of Japan (<http://ais.biodic.or.jp>).

Features 地点名

8 - Kumagera Chute
クマガラシュート



PRINTING INSTRUCTIONS

STEP 1

Load your printer with A3 printer paper (297mm x 420mm). If you've only got Tabloid or Ledger size (279mm x 432 mm), just follow the instructions below. You'll achieve an accurate scale, but the map will be clipped a little at the top and bottom.

STEP 2

Open the print window by clicking on File > Print (or hitting Ctrl + P on your keyboard).

STEP 3

Make sure "Actual Size" is selected.

STEP 4

For double-sided printing, select "Print on both sides of paper".

STEP 5

For best results, select the highest quality print option available on your printer (settings will vary).

STEP 6

You won't need this instructions page, so just select the pages that don't include this instruction sheet.

STEP 7

Click "Print".

PLEASE PRINT AT 'ACTUAL SIZE' (NO SCALING)

The 1:25,000 scale used in the map is accurate if the PDF is printed without scaling (i.e., ACTUAL SIZE). Follow the instructions on this page to ensure an accurate rendering of the scale.

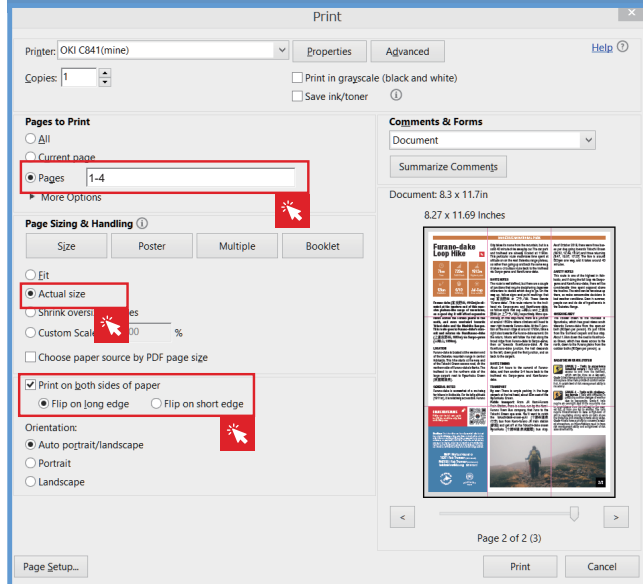
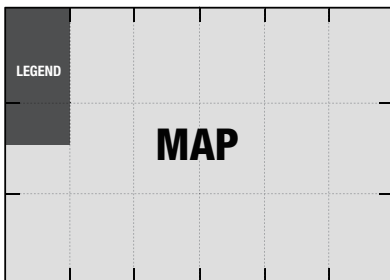


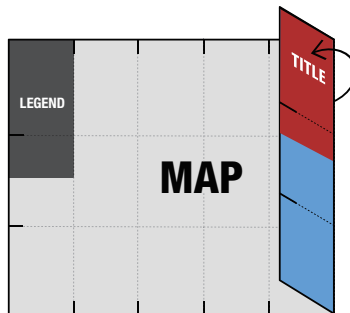
Figure 1. Ensure "Actual Size" is selected (Windows).

ORIGAMI INSTRUCTIONS

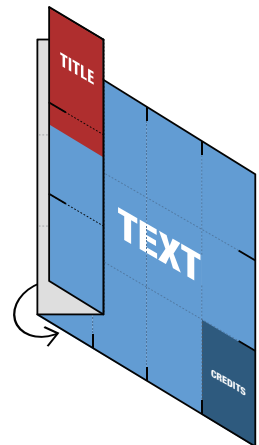
1



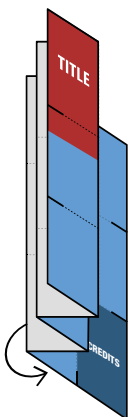
2



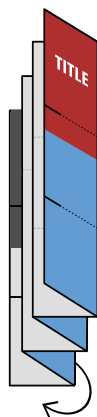
3



4



5



6



7

