

Dairoku-yama
Southern Approach

大麓山 (南面) Ski Tour Map 1:25000

02505007501,000 m

1cm on the map equals 250m on the ground

Map declination from GRID NORTH: 9°43' W (-3' per year) | MGRS Zone: 54TXP
Grid spacing: 1000m | Map by hokkaidowilds.org CC BY SA 2023/12/09

Symbol Key

3:00

Ascent/Ski-tour Route (time) *

Freeride Route *

Advanced Route *

5

National Highway

66

Prefectural Highway / Gate

Municipal Road

Minor Municipal Road

Forestry Road

Bus route / Stop

Ski lift / Abandoned Ski lift

Municipal boundary

600

Contour lines (100m, 10m)

Cliffs / Bluff / Rocks

Trees / No trees

G3 G6

Backcountry gates

Ploughed parking / Onsen facility

Shop / Public toilet

Hut / Campground

Shrine / Temple

Hot spring / Fumerole

Transmission tower

* Dashed route line denotes technical skill required (adverse surface conditions, very high exposure to avalanche/falls etc).

ONLINE ROUTE GUIDE - Please visit the full route guide for route description, GPS files, and safety notes: <https://hokw.jp/dairoku>

THIS IS A GEOREFERENCED PDF - Download the free Avenza Maps® app for iPhone and Android to see your location in real time: <https://hokw.jp/geodairk>

Disclaimer The information on this map was derived from digital databases provided by the Geospatial Information Authority of Japan and the Biodiversity Center of Japan. Care was taken in the creation of this map. HokkaidoWilds.org cannot accept any responsibility for errors, omissions, or positional accuracy. There are no warranties, expressed or implied, including the warranty of merchantability or fitness for a particular purpose, accompanying this product. However, notification of any errors will be appreciated.

この地図の作成に当たっては、国土地理院長の承認を得て、国土地理院の基盤地図情報及び電子地図データ(タイル)を使用した。(承認番号平川検定、第001号)。また、1:25,000縮尺の地形図データ(国土地理院の基盤地図情報)を使用した。HokkaidoWilds.orgの作成。加工したものであります。

We created this map using the Geospatial Information Authority of Japan digital basemap (tiles) and basemap data, with the Authority Director's permission (no. 001-20-2023, date 01/20/2023). We also modified 1:25,000 scale vegetation map data created by the Biodiversity Center of Japan (<http://gis.biodic.go.jp/>).

Maefurano-dake plus Ningle Hut

前富良野岳 Ski Tour Map 1:25000

0 250 500 750 1,000 m

1 cm on the map equals 250m on the ground

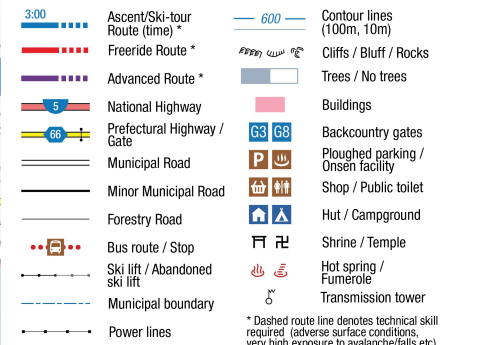
Map. declination from GRID NORTH: **9°43' W** (-3' per year) | MGRS Zone: **54TYP**
Grid spacing: **1000m** | Map by hokkaidowilds.org CC BY SA 2023/12/09

前富良野岳 Ski Tour Map 1:25000



Mag. declination from GRID NORTH: **9°43' W** (-3' per year) | MGRS Zone: **54TXP**
Grid spacing: **1000m** | Map by hokkaidowilds.org CC BY SA 2023/12/09

Symbol Key



* Dashed route line denotes technical skill required (adverse surface conditions, very high exposure to avalanche/falls etc)



 **ONLINE ROUTE GUIDE** - Please visit the full route guide for route description, GPS files, and safety notes: <https://hokw.jp/maefur>

THIS IS A GEOREFERENCED PDF - Download the free Avenza Maps® app for iPhone and Android to see your location in real time: <https://hokw.jp/geomfr>

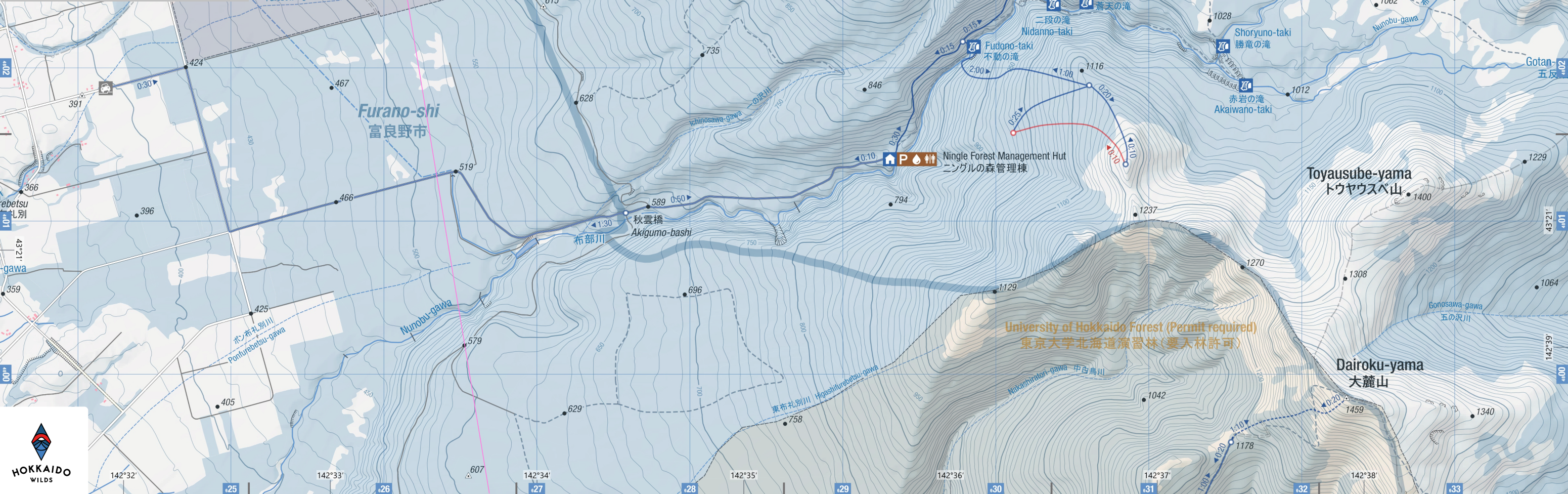


Disclaimer The information on this map was derived from digital databases provided by the Geospatial Information Authority of Japan and the Biodiversity Center of Japan. Care was taken in the creation of this map. Hokkaido Wildlife.org cannot accept any responsibility for errors, omissions, or positional accuracy. There are no warranties, expressed or implied, including the warranty of merchantability or fitness for a particular purpose, accompanying this product. However, notification of any errors will be appreciated.

We created this map using the Geospatial Information Authority of Japan digital basemap (tiles) and basemap data, with the Authority director's permission (no. Hei-30-joshi, dai-867go). We also modified 1:25000 scale vegetation map data created by the Biodiversity Center of Japan (<http://gis.biodic.go.jp>).

Features 地点名

8 - Kumagera Chute
クマゲラシュート



Tokachi Range

Southern End

十勝連峰 (南方)

Ski Tour Map

1:25000

02505007501,000 m

1cm on the map equals 250m on the ground

Map declination from GRID NORTH: 9°43' W (-3' per year) | MGRS Zone: 54TXP

Grid spacing: 1000m | Map by hokkaidowilds.org CC BY SA 2023/12/09

Symbol Key

3:00

Ascent/Ski-tour Route (time) *

Freeride Route *

Advanced Route *

National Highway

Prefectural Highway / Gate

Municipal Road

Minor Municipal Road

Forestry Road

Bus route / Stop

Ski lift / Abandoned ski lift

Municipal boundary

Power lines

600

Contour lines (100m, 10m)

Cliffs / Bluff / Rocks

Trees / No trees

Buildings

Backcountry gates

Ploughed parking / Onsen facility

Shop / Public toilet

Hut / Campground

Shrine / Temple

Hot spring / Fumerole

Transmission tower

* Dashed route line denotes technical skill required (adverse surface conditions, very high exposure to avalanche/falls etc).

ONLINE ROUTE GUIDES

Please visit the full route guides for route description, GPS files, and safety notes: <https://hokw.jp/ansei>

THIS IS A GEOREFERENCED PDF

Download the free Avenza Maps® app for iPhone and Android to see your location in real time: <https://link.avenza.com/xbds>

Disclaimer The information on this map was derived from digital databases provided by the Geospatial Information Authority of Japan and the Biodiversity Center of Japan. Care was taken in the creation of this map. Hokkaidowilds.org cannot accept any responsibility for errors, omissions, or positional accuracy. There are no warranties, expressed or implied, including the warranty of merchantability or fitness for a particular purpose, accompanying this product. However, notification of any errors will be appreciated.

この地図の作成に当たっては、国土地理院長の承認を得て、国府発刊の基礎地図情報及び電子地図(タイル)を使用した。(承認番号平川特授 第99号) また、1:25,000縮尺の地形図データ(国土地理院)と地形図(国土地理院)を使用した。

We created this map using the Geospatial Information Authority of Japan digital basemap (tiles) and basemap data, with the Authority Director's permission (no. 99-2023-001-0010). We also modified 1:25,000 scale vegetation map data created by the Biodiversity Center of Japan (<http://gis.biodic.go.jp/>).

Features 地点名

1 - Kita-one TGR 北尾根TGR

2 - Kita-one 北尾根

3 - Nishi-shamen 西斜面

4 - Hoko-iwa Chokusen Chute ホコ岩直線シュート

5 - Hoko-iwa Ku-no-ji Chute ホコ岩くの字シュート

6 - Beberui-sawa ベベルイ沢

7 - L-ji Chute L字シュート

8 - Kumagera Chute クマガラシュート

9 - Kaun Bowl 華雲ボウル

10 - Onsen Slope 温泉スロープ

11 - D-one D尾根

12 - Yatsude-iwa 八手岩

13 - Yatsude-one 八手尾根

14 - Hokusei-ryo 北西稜

15 - Kako-runse 下降ルンゼ

16 - Furiko-sawa フリコ沢

17 - Yon-danme 四段目

18 - Gake-one 崖尾根

19 - Meoto-iwa 夫婦岩

20 - Nihon-matsu 二本松

21 - Byobu-iwa 屏風岩

22 - Sho-terrace 小テラス

23 - Dai-terrace 大テラス

24 - Osawa 大沢

25 - Nishi-no-tani 西の谷

26 - Sandan-kako 三段火口

27 - Ichi-danme 一段目

28 - Ni-danme 二段目

29 - Namida-kabe 涙壁

30 - San-danme 三段目

31 - Roka Corridor 廊下

32 - Higashi-no-tani 東の谷

33 - Higashi-kabe 東壁

34 - Namako-one ナマコ尾根

35 - Kujira-one くじら尾根

36 - Kabawara-one カバワ尾根

37 - Chiharu-zawa 千春沢

38 - Shomen Slope 正面スロープ

39 - Bowl-shamen ボウル斜面

40 - Yu-no-sawa 湯の沢

41 - Ponpi-sawa ポンピ沢

CAUTION: Chute naming does not guarantee possibility to ski.

Waterfalls 滝

A - Hokke-no-taki 法華ノ滝

B - Yuima-no-taki 維摩ノ滝

C - Shoman-no-taki 勝盤ノ滝

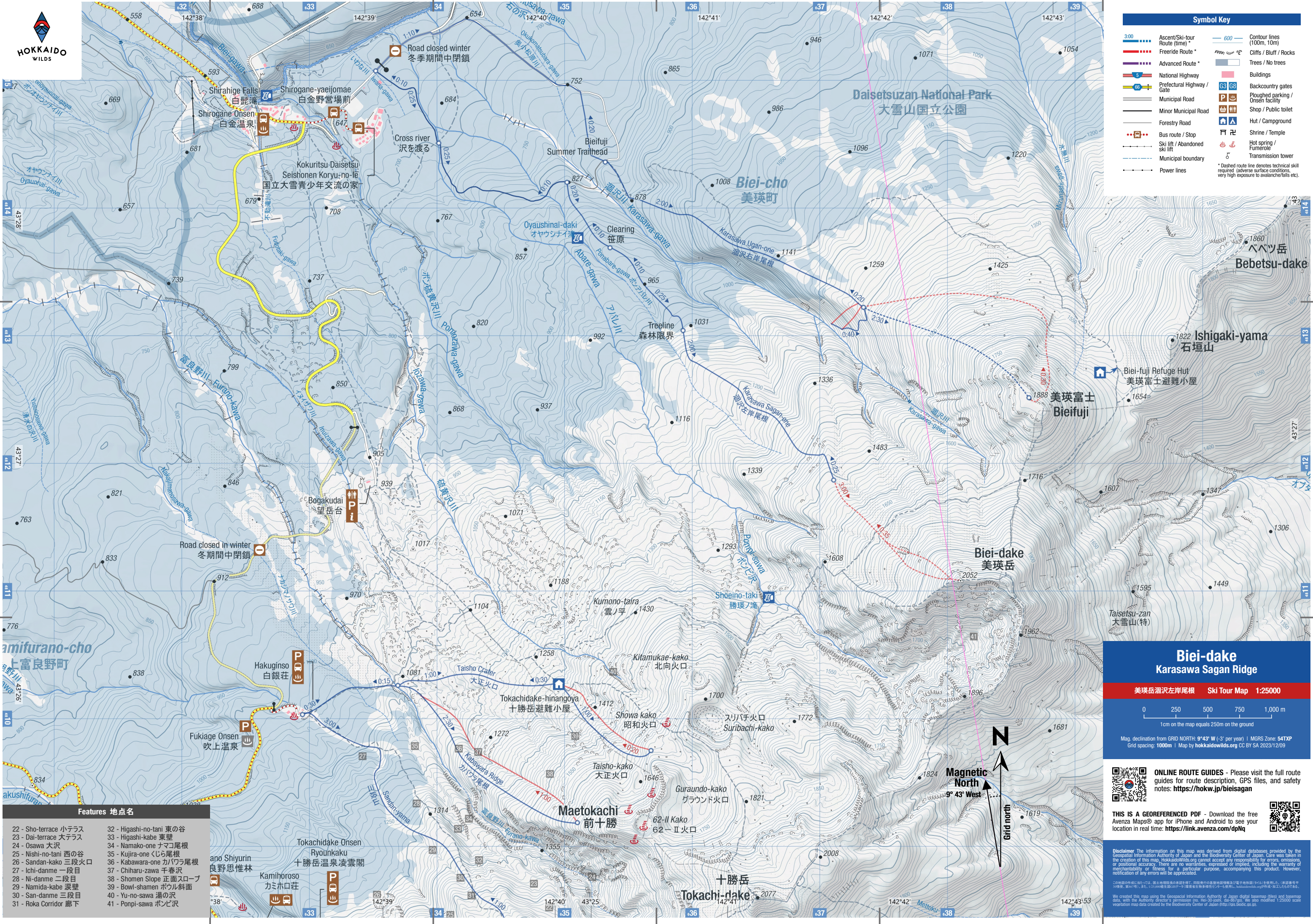
D - Ojika-no-taki 雄鹿ノ滝

E - Mejika-no-taki 雌鹿ノ滝

F - Kokonoe-no-taki 九重ノ滝

G - Kaun-no-taki 華雲ノ滝

HOKKAIDO WILDS



Symbol Key			
3.00	Ascent/Ski-tour Route (time)	Contour lines (100m, 10m)	
Freeride Route *		Cliffs / Bluff / Rocks	
Advanced Route *		Trees / No trees	
5	National Highway	Buildings	
60	Prefectural Highway / Gate	Backcountry gates	
Municipal Road		Ploughed parking / Onsen facility	
Minor Municipal Road		Shop / Public toilet	
Forestry Road		Hut / Campground	
Bus route / Stop		Shrine / Temple	
Ski lift / Abandoned ski lift		Hot spring / Fumerole	
Municipal boundary		Transmission tower	
Power lines			
* Dashed route line denotes technical skill required (adverse surface conditions, very high exposure to avalanche/falls etc).			

Features 地点名	
22 - Sho-terrace 小テラス	32 - Higashi-no-tani 東の谷
23 - Dai-terrace 大テラス	33 - Higashi-kabe 東壁
24 - Osawa 大沢	34 - Namako-one ナマコ尾根
25 - Nishi-no-tani 西の谷	35 - Kujira-one くじら尾根
26 - Sandan-kako 三段火口	36 - Kabawara-one カバワ尾根
27 - Ichi-danme 一段目	37 - Chiharu-zawa 千春沢
28 - Ni-danme 二段目	38 - Shomen Slope 正面スロープ
29 - Namida-kabe 涙壁	39 - Bowl-shamen ボウル斜面
30 - San-danme 三段目	40 - Yu-no-sawa 湯の沢
31 - Roka Corridor 廊下	41 - Ponpi-sawa ポンピ沢

Biei-dake

Karasawa Sagan Ridge

美瑛岳沼沢左岸尾根 Ski Tour Map 1:25000

0 250 500 750 1,000 m

1cm on the map equals 250m on the ground

Mag. declination from GRID NORTH: 9°43' W (-3' per year) | MGRS Zone: 54TXP
Grid spacing: 1000m | Map by hokkaidowilds.org CC BY SA 2023/12/09

ONLINE ROUTE GUIDES - Please visit the full route guides for route description, GPS files, and safety notes: <https://hokw.jp/bieisagan>

THIS IS A GEOREFERENCED PDF - Download the free Avenza Maps® app for iPhone and Android to see your location in real time: <https://link.avenza.com/dpNq>

Disclaimer: The information on this map was derived from digital databases provided by the Geospatial Information Authority of Japan and the Biodiversity Center of Japan. Care was taken in the creation of this map. HokkaidoWilds.org cannot accept any responsibility for errors, omissions, or positional accuracy. There are no warranties, expressed or implied, including the warranty of merchantability or fitness for a particular purpose, accompanying this product. However, notification of any errors will be appreciated.

この地図の作成に当たっては、国土地理院の基図データと電子地形図（タム）を利用した。（承認番号平30第1号）、また、1:25,000縮尺の地形図（地形図）も併用し、HokkaidoWilds.orgの作成・加工したものである。

We created this map using the Geospatial Information Authority of Japan digital base map (tiles) and base map data, with the Authority director's permission (no. Hoi-30-jssn, 20-36/20). We also modified 1:25000 scale vegetation map data created by the Biodiversity Center of Japan (<http://gis.biodic.go.jp>).

Symbol Key

	Ascent/Ski-tour Route (time) *		Contour lines (100m, 10m)
	Freeride Route *		Cliffs / Bluff / Rocks
	Advanced Route *		Trees / No trees
	National Highway		Buildings
	Prefectural Highway / Gate		Backcountry gates
	Municipal Road		Ploughed parking / Onsen facility
	Minor Municipal Road		Shop / Public toilet
	Forestry Road		Hut / Campground
	Bus route / Stop		Shrine / Temple
	Ski lift / Abandoned ski lift		Hot spring / Fumerole
	Municipal boundary		Transmission tower

* Dashed route line denotes technical skill required (adverse surface conditions, very high exposure to avalanche/falls etc).

Features 地点名

- | | |
|----------------------------------|--------------------------------|
| 42 - Otaki Waterfall 大滝 | 47 - Nishi-ryo (West Ridge) 西稜 |
| 43 - Chuo-ryo (Center Ridge) 中央稜 | 48 - West Col 西コル |
| 44 - A-kabe (A-Wall) A壁 | 49 - East Col 東コル |
| 45 - B-kabe (B-wall) B壁 | 50 - Bakuretsu-zawa Gully 爆裂沢 |
| 46 - Hokusei-ryo (NW Ridge) 北西稜 | |

Biei-fuji

美瑛富士涸沢右岸尾根 Ski Tour Map 1:25000



Mag. declination from GRID NORTH: 9°43' W (-3' per year) | MGRS Zone: 54TXP
Grid spacing: 1000m | Map by hokkaidowilds.org CC BY SA 2023/12/09



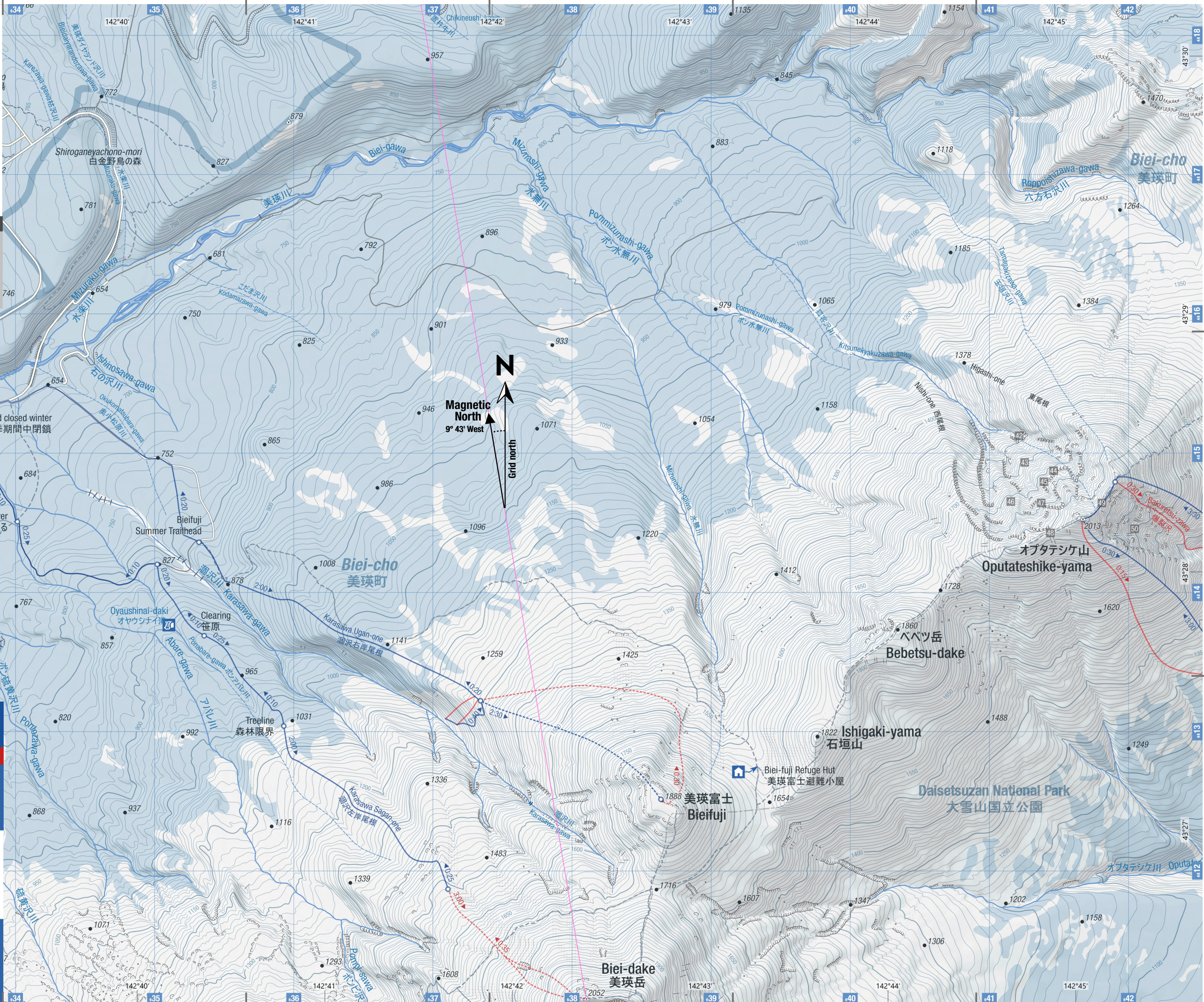
ONLINE ROUTE GUIDES - Please visit the full route guides for route description, GPS files, and safety notes: <https://hokw.jp/bieiugan>

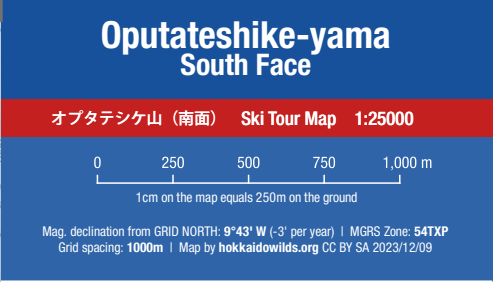
THIS IS A GEOREFERENCED PDF - Download the free Avenza Maps® app for iPhone and Android to see your location in real time: <https://link.avenza.com/oB55>



Disclaimer The information on this map was derived from digital databases provided by the Geospatial Information Authority of Japan and the Biodiversity Center of Japan. Care was taken in the creation of this map. HokkaidoWilds.org cannot accept any responsibility for errors, omissions, or positional accuracy. There are no warranties, expressed or implied, including the warranty of merchantability or fitness for a particular purpose, accompanying this product. However, notification of any errors will be appreciated.

We created this map using the Geospatial Information Authority of Japan digital basemap (tiles) and basemap data, with the Authority director's permission (no. Hei-30-joshi, dai-867go). We also modified 1:25000 scale vegetation map data created by the Biodiversity Center of Japan (<http://gis.biodic.go.jp>).





3:00	Ascent/Ski-tour Route (time)*	600	Contour lines (100m, 10m)
	Freeride Route *		Cliffs / Bluff / Rocks
			Trees / No trees
	Advanced Route *		Buildings
	National Highway		Backcountry gates
	Prefectural Highway / Gate		Ploughed parking / Onsen facility
	Municipal Road		Shop / Public toilet
	Minor Municipal Road		Hut / Campground
	Forestry Road		Shrine / Temple
	Bus route / Stop		Hot spring / Fumerole
	Ski lift / Abandoned ski lift		Transmission tower
	Municipal boundary		
	Power lines		

* Dashed route line denotes technical skill required (adverse surface conditions, very high exposure to avalanche/falls etc).

THIS IS A GEOREFERENCED PDF - Download the free Avenza Maps® app for iPhone and Android to see your location in real time: <https://hokw.jp/geooput>

Disclaimer The information on this map was derived from digital databases provided by the Geospatial Information Authority of Japan and the Biodiversity Center of Japan. Care was taken in the creation of this map. HokkaidoWilds.org cannot accept any responsibility for errors, omissions, or positional accuracy. There are no warranties, expressed or implied, including the warranty of merchantability or fitness for a particular purpose, accompanying this product. However, notification of any errors will be appreciated.

③ 地図の作成に当たっては、国土院院長の承認を得て、同院発行の基礎地図情報及び電子地形図(タイル)を使用した。(承認番号 30 規発, 第 867 号)。また、125,000 縮尺の GIS データ(環境省生物多様性センターも使用し、hokkaidowide.org/files/加工したものである。

We created this map using the Geospatial Information Authority of Japan (files) and basemap data, with the Authority director's permission (no. Hei-30-joshi, da-867)g). We also modified 1:25000 scale vegetation map data created by the Biodiversity Center of Japan (<http://gis.biodic.go.jp>).

42 - Otaki Waterfall 大滝
43 - Chuo-ryo (Center Ridge)
中央稜
44 - A-kabe (A-Wall) A壁
45 - B-kabe (B-wall) B壁
46 - Hokusei-ryo (NW Ridge)
北西稜
47 - Nishi-ryo (West Ridge)
西稜
48 - West Col 西コル
49 - East Col 東コル
50 - Bakuretsu-zawa Gully
爆裂沢

