



# Mayoizawa-yama Kamihirasawa Route

迷沢山(上平沢林道) Ski Tour Map 1:25000



0 250 500 750 1,000 m

1cm on the map equals 250m on the ground

Magnetic declination from GRID NORTH: 10°00' W | MGRS Zone: 54TWN  
Grid spacing: 1000m | Projection: WGS 84 / UTM zone 54N  
Map by [hokkaidowilds.org](http://hokkaidowilds.org) CC BY SA 2025/01/28

## Symbol Key


\* Dashed route line denotes technical skill required (adverse surface conditions, very high exposure to avalanche/falls etc).



**ONLINE ROUTE GUIDE** - Please visit the full route guide for route description, GPS file, and safety notes:  
<https://bit.ly/mayoikamihira>

**THIS IS A GEOREFERENCED PDF** - Download the free Avenza Maps® app for iPhone and Android to see your location in real time: <https://link.avenza.com/khXh>

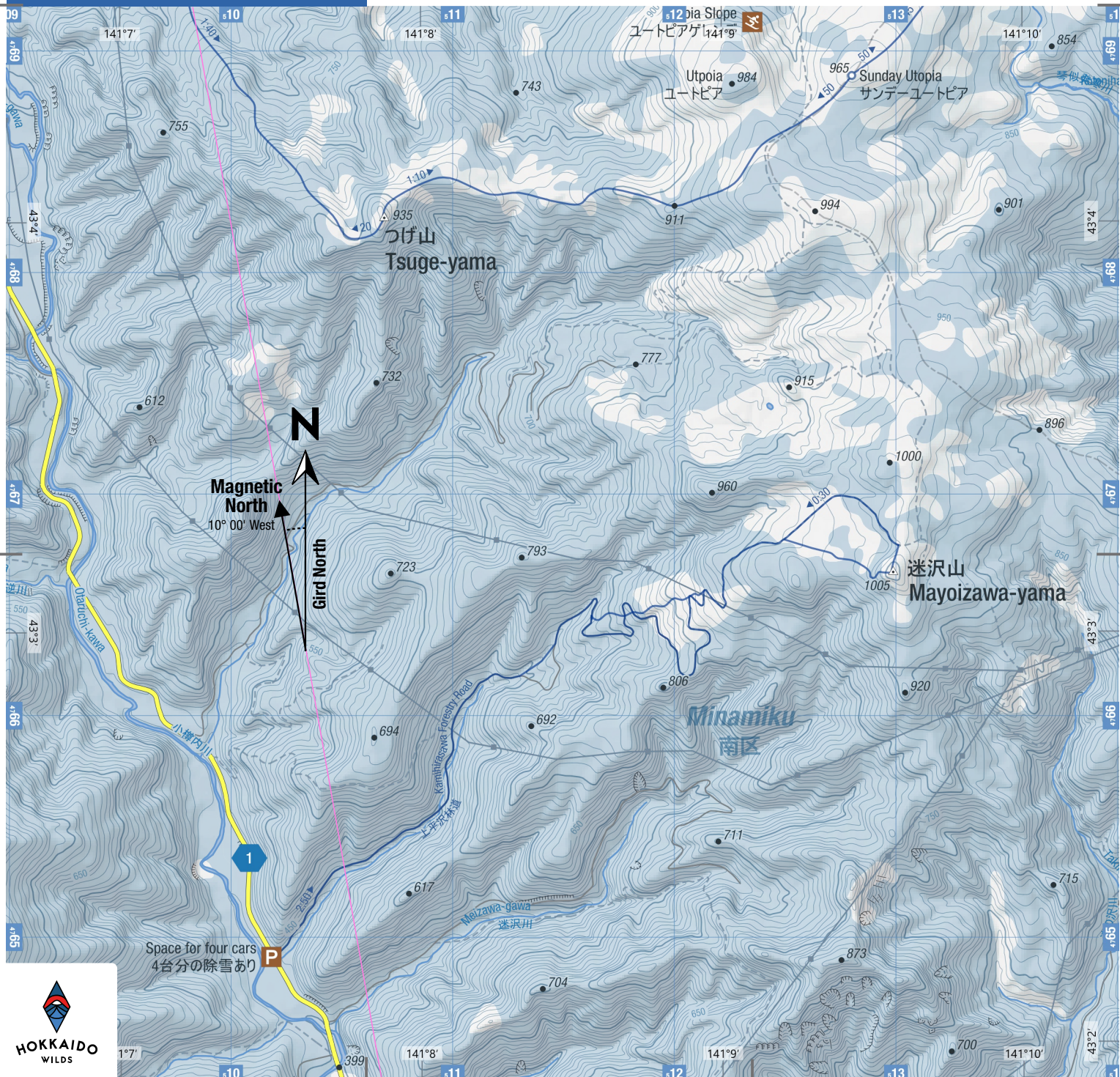


## Japanese Map Glossary

Romaji	Kanji	English
bunki	分岐	junction
cho	町	town
dake/mine	岳/峯	peak
eki	駅	station
goya/koya	小屋	hut
hinangoya	避難小屋	shelter
ike	池	pond
kawa/gawa	川	river
kako	火口	crater
ko/mizumi	湖	lake
kyo	峡	gorge
numa	沼	pond
onsen	温泉	hot spring
sawa	沢	stream
taira/daira	平	plateau
tani/dani	谷	valley
taki	滝	waterfall
toge	峠	pass
yama/san/zan	山	mountain

この地図の作成に当たっては、国土地理院長の承認を得て、同院発行の基盤地図情報及び電子地形図（タイル）を使用した。（承認番号平30情使、第867号）。また、1/25,000植生図GISデータ（環境省生物多様性センターも使用し、hokkaidowilds.orgが作成・加工したものである）。

We created this map using the Geospatial Information Authority of Japan digital basemap (tiles) and basemap data, with the Authority director's permission (no. Hei-30-joshi, dai-867go). We also modified 1:25000 scale vegetation map data created by the Biodiversity Center of Japan (<http://gis.biodic.go.jp/>).





# Mayoizawa-yama

## Kamihirasawa Route

 4hrs Time	 550m Total Climb	 1005m Highest point
 9km Distance	 4/10 Difficulty	 Jan-Mar Best season

On this approach to Mayoizawa-yama 迷沢山 (1005m), skiers have the option to stay on an easy-to-follow forestry road the entire way. This makes it a great option for folks just starting on their backcountry journey, or any backcountry skier looking for a nice walk on skis early in the season. There are options to shortcut the winding forestry road though, so skiers confident in their route-finding will enjoy some tree skiing along the broad ridge on the descent.

### LOCATION

Mayoizawa-yama is a flat, non-descript peak west of Sapporo City in the foothills. This approach to the peak starts from the western side, from Prefectural Highway 1 on the way to Sapporo Kokusai Ski Resort 国際スキー場 from Jozankei 定山溪. The trailhead is the entrance to the Kamihirasawa Forestry Road 上平沢林道.

### GENERAL NOTES

There are two popular winter approaches to Mayoizawa-yama (literally “Lost-your-way-creek Mountain”). One is from



the east, from the sleepy suburb of Heiwa in Sapporo City proper. Arguably, that route has the better skiing, as it's possible to ski most of the descent along the clear-cut forest under the power lines. This western approach, however, has its merits. It's a dead-easy approach, with a forestry road to follow to the summit. The forestry road will also be suitable for skinning/snowshoeing as early as late December – much earlier than the area's ‘off-road’ backcountry terrain. This makes this western Kamihirasawa route suitable for an easy early-season climb to get the climbing legs into shape.

It's not all boring forestry road though. For the upper 30% or so of the route, it's possible to shortcut the winding forestry road to get some untracked trail-breaking and downhill skiing in.

### ROUTE TIMING AND NOTES

If you're treating this peak as a backcountry climbing training session, it's unlikely you'll spend more than a few hours on the skis. There are bird-watching and general forest-bathing (*shinrin-yoku* 森林浴) opportunities along the way, however, so it's worth packing a hot drink and a lunch, and make a nice morning or afternoon out of it.

If you just want a brain-dead easy hike to the summit, from the Kamihirasawa Forestry Road gate, follow the snowed-in road to the summit. There are several dog-leg bends along the way. Arguably, however, it's more interesting to ditch the road about 2km from the gate. From here, gain the main southwest-aspect ridge and break trail through the old-growth forest. You'll cross the winding, meandering road a couple of times. At 540m altitude on the road, you'll pass under the first of two power lines. The second one is at 830m along the southwest ridge. The upper power line is characterized by a large clearing in the forest under the lines.

The summit of Mayoizawa-yama is more of a knoll than anything else, surrounded by a large plateau-like expanse. Take care in low visibility conditions not to get lost.

On the descent, either follow the forestry road all the way back down, or enjoy some tight tree turns along the main ridge.

### TRANSPORT

**By car:** Access by private vehicle is via Prefectural Road 1 – this is the road that accesses Sapporo Kokusai Ski Resort, either from Jozankei in the south, or Otaru in the north. Right at the trailhead is a small cleared area large enough to fit two vehicles. About 40m down the road is another small two-vehicle cleared spot. If your party has more than two vehicles, we'd recommend a park-and-drive approach, carpooling to reduce pressure on the parking spots. One option for larger parking areas close by are the Jozankei Dam Driftwood Processing Plant 定山溪ダム流木処理場 and the Lake Sapporo First Observation Deck 札幌湖第一展望台.

**Public transport:** There is no public transport to this route.

### SAFETY NOTES

Of particular note for Mayoizawa-yama is the broad, plateau-like summit area. In low visibility conditions, it wouldn't take much to get disoriented. Even if just following the forestry road, make sure to have route files and a map downloaded to your phone – make sure to do this in town before arriving at the trailhead. Mobile reception is sparse along this section of Prefectural Highway 1.

### ONSEN NEARBY

For those accessing this route from Sapporo, you'll be returning to the city via the Jozankei onsen area. There are a number of options, including Yu-no-hana 湯の花 (850yen), a large onsen complex with good views of the Jozankei river gorge from the outdoor baths. They also have a large, airy, open restaurant/lounge area. Closer to Sapporo City is also the more down-do-earth Matsu-no-yu 松の湯 (650yen), right next to the Toyohira River. They also have a small restaurant, plus lovely views of the river gorge from the outdoor baths. ■

### ONLINE ROUTE GUIDE

Please visit the full route guide for GPS file, interactive map, and extra safety notes: <https://bit.ly/mayoikamihira>



**Disclaimer** The information on this map was derived from digital databases provided by the Geospatial Information Authority of Japan and the Biodiversity Center of Japan. Care was taken in the creation of this map. HokkaidoWilds.org cannot accept any responsibility for errors, omissions, or positional accuracy. There are no warranties, expressed or implied, including the warranty of merchantability or fitness for a particular purpose, accompanying this product. However, notification of any errors will be appreciated.

MAP, TEXT, PHOTOS | Rob Thomson

[hokkaidowilds.org](https://hokkaidowilds.org) 2025/01/28

MAP FOLD & LAYOUT CONCEPT | Dominika Gan

Unless indicated otherwise, all content on this PDF (pages 1 to 1) is licensed under a Creative Commons Attribution-ShareAlike 4.0 International License (CC BY-SA 4.0). Please attribute <author-name> (hokkaidowilds.org), and let us know so we can link to your work. E.g., “Photo by Rick Sidle (hokkaidowilds.org)”



## PRINTING INSTRUCTIONS

### STEP 1

Load your printer with A4 printer paper (210mm x 297mm). If you've only got Letter size (215.9mm x 279.4 mm), just follow the instructions below. You'll achieve an accurate scale, but the map will be clipped a little at the top and bottom.

### STEP 2

Open the print window by clicking on File > Print (or hitting Ctrl + P on your keyboard).

### STEP 3

Make sure "Actual Size" is selected.

### STEP 4

For double-sided printing, select "Print on both sides of paper".

### STEP 5

For best results, select the highest quality print option available on your printer (settings will vary).

### STEP 6

You won't need this instructions page, so just select the pages that don't include this instruction sheet.

### STEP 7

Click "Print".

## PLEASE PRINT AT 'ACTUAL SIZE' (NO SCALING)

The 1:25,000 scale used in the map is accurate if the PDF is printed without scaling (i.e., ACTUAL SIZE). Follow the instructions on this page to ensure an accurate rendering of the scale.

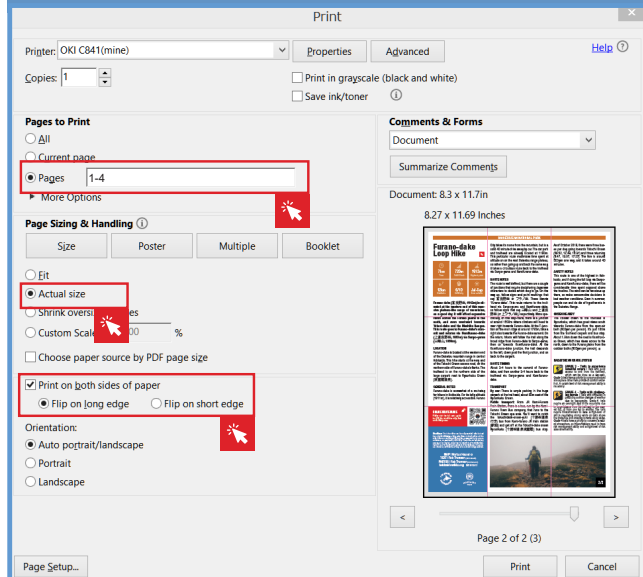


Figure 1. Ensure "Actual Size", and Pages 1-4 are selected (Windows).

## ORIGAMI INSTRUCTIONS

